

PROJECT EXPERIENCE **BROCHURE**



COMPANY PROFILE

CONWAY
& OWEN

WHO WE ARE



HISTORY

Charles Conway received a Bachelor of Science degree in Electrical Engineering from Auburn University and Wayne Owen received a Bachelor of Science in Mechanical Engineering from Vanderbilt University. Each went on to start their careers in engineering, developing a portfolio of notable projects and client relationships. Charles and Wayne began work in the commercial systems design arena. It was in these early years that the two met while working for a metro-Atlanta engineering firm. Both worked towards sharpening their design skills, learning the industry, and eventually obtaining their professional designations. As they continued work, their project portfolios began to include larger, more complicated, higher profile projects – some of which have shaped the Atlanta skyline. Their work also began to reach numerous points throughout the Southeast and the Eastern Seaboard. Charles and Wayne became recognized for their exceptional quality design. They were known and well respected among their peers and clients. With years of experience and numerous professional designations behind them, they considered starting their own company with a common goal which is to provide exceptional quality engineering and superior client service, but, with a “break the mold” environment for employees. So, in 2004, Conway & Owen was formed.

Today, Conway & Owen holds Professional Registrations in 32 states. Five Principals now own and manage the 34-employee company; a second office has been added in Auburn, Alabama. Of its employees, seven are Professional Engineers and six are LEED® Accredited Professionals. Conway & Owen has built a robust design portfolio with experience in virtually every commercial market. They strive to stay on top of emerging technologies and sustainability practices. A very large percentage of Conway & Owen clients are repeat clients. The company is also actively supportive and involved in numerous community and industry organizations and has developed its own mentoring program for junior employees and young engineers. In nearly fifteen years, Conway & Owen has grown from a two-man consulting firm to a recognizable company with a favorable industry presence and design work in 32 U.S. states.

Delivering unmatched client service and high quality results.

Our mission is to be committed to providing a higher level of service, quality and expertise that exceeds our clients’ expectations and allows our company to enjoy a unique and rewarding environment that breaks the mold of the engineering industry. This will be accomplished by focusing on the individual employee and understanding the importance of family, fun and personal satisfaction, thus resulting in a profitable and rewarding experience.



Engineering Excellence. Unmatched Client Service.

WHO WE ARE

FINANCIAL STRENGTH

Conway & Owen is in sound financial condition with several months of operating expenses in cash reserves and a \$500,000 line of credit with a current balance of \$0. The firm is a Georgia Registered S-Corporation and has a total of five shareholders. The shareholders own 100% of all stock.

ORGANIZATION

Conway & Owen, Inc. is a team-structured and client-focused firm. We have over 34 full-time employees and are based minutes outside metro-Atlanta, in Alpharetta, GA. Headquartered out of Alpharetta, GA, Conway & Owen also has an office in Auburn, AL to support many of our new and repeat clients in the southeast.

- Mechanical Engineering
- Electrical Engineering
- Plumbing
- Acoustical Engineering
- Audio-Visual Engineering
- Commissioning
- Lighting Design
- LEED / Sustainable Design Services

LEADERSHIP TEAM

Conway & Owen continues to focus on maintaining design involvement with the principals of the firm. Charles Conway, Wayne Owen, Noman Khan, Joe Shaffer, and Kevin Finlay are the firm's principals and are utilized to manage our own in-house peer reviews.



CHARLES CONWAY, PE, LEED AP, CBCP, CMVP
PRINCIPAL ELECTRICAL ENGINEER /
CEO
32 years of experience



WAYNE OWEN, PE
PRINCIPAL MECHANICAL ENGINEER /
CFO, MANAGING PRINCIPAL
24 years of experience



NOMAN KAHN, PE, LEED AP
PRINCIPAL ELECTRICAL ENGINEER /
MANAGING PRINCIPAL
25 years of experience



JOE SHAFFER, PE, LEED AP
PRINCIPAL MECHANICAL ENGINEER
19 years of experience



KEVIN FINLAY, PE
PRINCIPAL MECHANICAL ENGINEER
15 years of experience

Conway & Owen uphold the highest level of engineering standards and ethics while providing accurate and reliable design services. Our “principal-involved” team approach to engineering solutions has ensured that hundreds of clients realize their ultimate project vision. Design teams are a balance of electrical and mechanical disciplines that consistently work together from design through construction. Principals are involved to ensure quality. A “check-set” review is performed by principals at multiple stages throughout design to ensure quality control. Communication between the client and the design team is consistent throughout each phase of the design.

Engineering Excellence. Unmatched Client Service.

WHO WE ARE



WE ARE GREEN

Conway & Owen has provided MEP design services in Atlanta and the metro area since 2004. The founders of Conway & Owen, Charles Conway and Wayne Owen, began their design career in the area and are well known among their peers and clients here. Early on, they were interested in sustainability practices and have been involved in providing design for LEED Certification since its beginning. Conway & Owen's project work is numerous, varied and part of the metro-Atlanta skyline.

Conway & Owen keeps sustainability at the forefront of design. We work to integrate constructability with emerging technologies, keeping a sharp focus on sustainability. Examples of frequently utilized sustainability practices within our design include Life Cycle Analysis, design for LEED certification, design in accordance with EarthCraft standards, the use of high-efficiency HVAC systems such as variable-stage chillers and those with variable refrigerant flow (VRF), low-flow fixtures, LED and sensor-driven daylight harvesting lighting, and multi-level controls. Conway & Owen has seven LEED Accredited Professionals on staff.

AFFILIATIONS

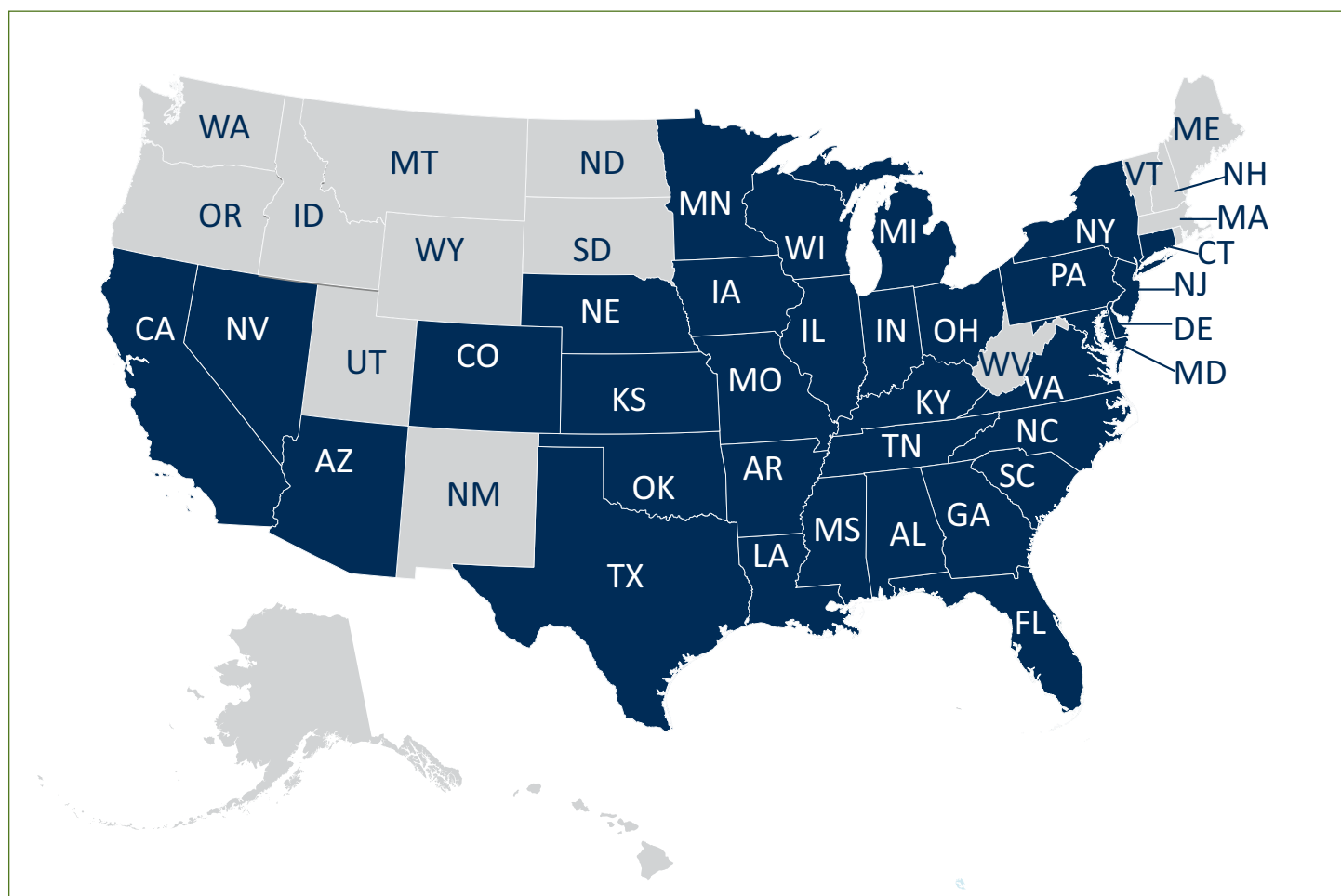
Conway and Owen is proud of their affiliation with the following organizations locally and nationally.



Conway & Owen, Inc. is registered in the following states:

32
STATES

- Texas
- Virginia
- Washington, D.C.
- Wisconsin



Engineering Excellence. Unmatched Client Service.

WHAT WE DO

MARKETS

Conway & Owen's over 100 years of combined experience has served nearly every market withing the A/E/C Industry. Our clients are architects, developers, owners and construction professionals. More than 80% of our projects are with repeat clients. Conway & Owen is also LEED® Accredited. Project markets include:

- Higher Education
- Leed®/Sustainable Design
- Healthcare
- Hospitality
- Corporate/Commercial Office
- Data Centers
- K-12
- Government
- Sports & Recreation
- Industrial
- Mixed-Use
- Residential
- Retail
- Lighting Design



Engineering Excellence. Unmatched Client Service.



CORPORATE / COMMERCIAL OFFICE

**CONWAY
& OWEN**

Corporate / Commercial Office

Featured Project

AVALON 8000

ALPHARETTA, GA

ARCHITECT

Wakefield Beasley & Associates

PROJECT DESCRIPTION

A 228,893 square foot, build-to-suit corporate office building includes executive and administrative offices, IT department and data center, full kitchen and dining facilities, fitness center and racquetball court, and game room. Design includes a five-story atrium with smoke control and 2N UPS and generator distribution. Scope includes a five-level garage with 765-parking spaces.

PROJECT FEATURE

Conway & Owen provide design services for numerous tenants- both office and retail.



Corporate / Commercial Office Project Sampling



TWELVE24

ATLANTA, GA

New, 16-story, 334,000 square foot Class-A office tower with 11,000 square foot of ground floor retail and restaurants as part of 3.94-acre site that sits in the heart of Atlanta's Central Perimeter and is directly connected to the Dunwoody Marta Station.



JACKSON HEALTHCARE CORPORATE OFFICES

ALPHARETTA, GA

A 180,000 square foot, build-to-suit corporate office building featuring executive and administrative offices; IT department and data center; full kitchen and dining facilities; fitness center and racquetball court; and game room. Design includes a five-story atrium with smoke control and 2N UPS and generator distribution.



HALCYON POINT BUILDINGS B AND C

MONTGOMERY, AL

Conway & Owen provided MEP design services for two three-story, 75,000 square foot Class "A" office building with core and shell. Additional projects included the second floor tenant fit-ups for Morgan Keegan and the Alabama Housing and Financing Authority.

CHICK-FIL-A CORPORATE HEADQUARTERS

COLLEGE PARK, GA

A 200,000 square foot multiple interior fit-up design project including IT Department, fitness center, Finance Department, simulation kitchens, and administration throughout several different buildings on the Chick-Fil-A headquarters complex.



COX ENTERPRISES, 1001 PERIMETER SUMMIT

ATLANTA, GA

70,000 square foot of multiple projects that included the second generation tenant fit-up of an existing building. The building spaces included offices, conference rooms, training rooms, copy/printer room, and IDF closets.

Engineering Excellence. Unmatched Client Service.

The background image shows a surgical room with a large, circular surgical light fixture hanging from the ceiling. Below the light, a surgical table is visible, partially covered with a white cloth. The room has green tiled walls and various medical equipment, including monitors and carts. A large, semi-transparent blue overlay covers the majority of the image, creating a professional and clinical atmosphere.

HEALTHCARE

CONWAY
& OWEN

Featured Project

**MURFREESBORO
MEDICAL OFFICE
BUILDING & SURGERY
CENTER**

MURFREESBORO, TN

ARCHITECT

Kennedy & Associates, Inc.

PROJECT DESCRIPTION

MEP design for a 75,000 square foot, three-story core and shell. Additional tenant fitup projects within the building include: ASC, radiology, clinical, physical therapy, sleep center, restorative health, plastic surgery, and home care solutions. The building utilizes packaged direct expansion variable airvolume roof top units.

Additional work included a 16,000 square foot ambulatory surgical suite with four ORs and support for a certified outpatient center. The center is conditioned with a chilled water VAV rooftop unit with HEPA filtration. Humidity is controlled via steam humidification. Plumbing systems include RO filtration for autoclave sterilizers and water softeners. Electrical generator and emergency distribution is provided for life safety, critical systems, and equipment branches to comply with the NEC517 and NFPA 99.

PROJECT FEATURE

The facility performs EKGs with direct access to laboratory and radiology laboratories.



Healthcare Project Sampling



GRADY MEMORIAL HOSPITAL RENOVATIONS

ATLANTA, GA

Renovations for a 953-bed City of Atlanta medical center. The Scope of this project was over 12,000 square foot of fit-up and renovation including MRI, CT, X-ray, Fluoroscopy, and exam and support areas. HVAC systems include chilled water VAV, chilled water constant volume and DX split systems. Electrical systems include integration into existing emergency backup power.



JOHNS CREEK MEDICAL OFFICE BUILDING

JOHNS CREEK, GA

A 93,500 square foot, four-story medical office building shell and core.

ATHENS REGIONAL HOSPITAL

ATHENS, GA

Design services were provided for the renovations to the existing 4th floor of the hospital.

CHILDREN'S HEALTHCARE OF ATLANTA

ATLANTA, GA

A tenant fit-up project for Children's Healthcare of Atlanta. The scope included exam rooms, procedure rooms, and childcare area.



PALMETTO HEALTH COUNCIL CENTER

PALMETTO, GA

A new 22,000 square foot, three-story medical office building in Palmetto, Georgia. The new facility will offer a wide range of medical services to the public, including those uninsured. The project will utilize a ground source heat pump system including a geothermal loop buried on the property and water-source heat pump units inside. Photovoltaic panels will be mounted on the roof so that a portion of the building's power usage will be offset. The project achieved LEED® Gold certification.

JOAN GLANCY PARKING DECK

DULUTH, GA

A 120,000 square foot, four-story parking deck connected to the Joan Glancy Hospital.

LIFEPOINT

CHARLESTON, SC

A new two-story, build-to-suit building that is over 50,000 square foot. The facility is for a certified organ procurement organization for recovery services in South Carolina. The project included a shell and core and interior build-out including three operating rooms and support areas. The center is conditioned with VAV rooftop units with HEPA filtration. Humidity is controlled via steam humidification. Medical gas systems provide oxygen, medical air, nitrous oxide, and medical vacuum.



HIGHER EDUCATION

CONWAY
& OWEN

Higher Education

Featured Project

CLEMSON UNIVERSITY
SCHOOL OF NURSING

GREENVILLE, SC

ARCHITECT

Batson Associates, inc.

PROJECT DESCRIPTION

A new, four-story, 79,000 square foot, 800-student school of nursing in collaboration with the Greenville Healthcare System (GHS) is a clinical learning and research building that offers a hospital-like environment with virtual reality IV simulators and high-fidelity human patient simulators, classrooms, and offices.

PROJECT FEATURE

The combined simulation laboratories in the USC School of Medicine Greenville and Clemson University Nursing building will represent one of the largest simulation centers in the Country at approximately 30,000 square foot.



Higher Education Project Sampling



AUBURN UNIVERSITY KINESIOLOGY BUILDING

AUBURN, AL

A new 3-story, 60,000 square foot laboratory building for the Scientific Study of Human Movement. The laboratory spaces include Motion Study, Bio Mechanics, Motor Development, Tiger Fit Lab, Applied Physiology, Epidemiology, Exercise Behavior, Motor Learning, GTA Lab, Computer Lab, three Sports Performance Optimization Labs, Neuro Mechanics, Cardiovascular Research, Cardiovascular Protection, Biochemistry, Muscle Physiology, Thermal Regulation, and Environmental Chamber. The HVAC system utilized the University's district energy plant for the chilled water source. The project is designed for LEED Silver Certification.

CHATTAHOOCHEE TECHNICAL COLLEGE ACADEMIC BUILDING

CANTON, GA

A new 62,500 square foot academic facility that serves as a satellite campus of ATC. The project includes 350 parking spaces and houses classroom space for ten fields of study. It was designed for LEED Silver certification.



GEORGIA GWINNETT COLLEGE BUILDING C3

LAWRENCEVILLE, GA

A new, three-story, 55,000 square foot addition to an existing building. Design included classrooms, support spaces, and administrative offices. Design also included a chilled-water, roof-mounted variable volume unit with VAV and PIU terminal boxes and a separate, dedicated unit for IT and Communications. Systems were designed for reduced sound power levels as GGC is walking campus.



AUBURN UNIVERSITY MONTGOMERY STUDENT WELLNESS CENTER

MONTGOMERY, AL

A new 75,000 square foot recreational facility designed for LEED Silver certification. The center serves as a new gateway to the campus and includes weight training and cardiovascular areas, aquatics facilities, a running track, climbing wall, and a multipurpose gymnasium. Also provided are spaces from a sun garden to classrooms to performance labs that encourage people to make healthy choices in their lives.



GEORGIA INSTITUTE OF TECHNOLOGY QUAD CENTER CAFÉ

ATLANTA, GA

Project included a new, 3-story food court and gathering place located in the Biotechnology Complex.



HOSPITALITY



CONWAY
& OWEN

Featured Project

BRAY'S ISLAND DINING
CLUB RENOVATION

SHELDON, SC

ARCHITECT

Chapman Design Studio

PROJECT DESCRIPTION

Electrical renovations to a 10,000 square foot private club dining facility. The design scope included dining areas; private dining rooms, casual bar with dining verandas, a full service kitchen and lighting design. Lighting renovation and design included color corrected LED fixtures accented with owner furnished decorative chandeliers.

PROJECT FEATURE

The new lighting control system allowed for seamless transition from daytime to evening dining with an extended fade rate so that the change would not be noticed by the dining patrons.



Hospitality Project Sampling



COCA-COLA EVENT CENTER

OPELIKA, AL

MEP design services for the renovation of the historic, 1938 Coca-Cola syrup manufacturing and distribution facility. Design services included renovation of the existing facility and design for an expansion, totaling 33,000 square foot. The renovated and expansion of the old facility into an event center included ballrooms, meeting and conference space, administration and general office space, storage areas and a commercial kitchen.

BARNESLEY GARDENS RESORT INN & GEORGIAN HALL EVENT CENTER

ADAIRSVILLE, GA

MEP design services for a new, 31,000 square foot, 55-room lodge/inn and a 12,600 square foot event and conference center (Georgian Hall). The 12,600 square foot Georgian Hall includes a meeting space, ball room, kitchen, and support services.

THE OMNI HOTEL RENOVATION AND EXPANSION

INDIANAPOLIS, IN

MEP design for renovations to the Hotel's existing restaurant and HVAC system, construction of a new sports bar with kitchen, and hotel HVAC system, lighting and A/V systems. The project design scope also included design for the expansion of existing first floor restrooms, including new layout, plumbing fixtures and lighting.

THE HYATT HOUSE PEACHTREE DUNWOODY

DUNWOODY, GA

A new, 130,000 square foot, 185-key hotel with apartment style guest suites and event and conference space.

IN ITALY RESTAURANT

AUBURN, AL

MEP design services for a 5,500 square foot, second generation tenant fit-up located in a five-story building.



FLIP BURGER BOUTIQUE

ATLANTA, GA

Lighting design services for upscale restaurant and bar in the City of Atlanta. The project design scope included the Grafik Eye® room lighting system for energy conservation and better controllability.

THE WESTIN AT FOXHALL RESORT

DOUGLASVILLE, GA

New luxury, full amenity hotel and conference center located at Foxhall Resort and Sporting Club. Hotel features 200-keys, 125-Villas, a 20,000 square foot spa, pool and tennis venue. A 80,000 square foot meeting and conference center with an 8,000 square foot ballroom.

BEST WESTERN LOBBY RENOVATION AND ADDITION

ACWORTH, GA

MEP design services for the renovation of an existing hotel lobby and the addition of an apartment for the hotel manager above the lobby space.

CRESTWOOD SUITES

TULSA, OK

MEP renovations to the main entry canopy of the hotel. The project scope included electrical circuitry for new lighting and performance specifications for dry sprinkler fire protection.

A photograph of a large industrial warehouse interior, viewed from a low angle looking down a long aisle. The floor is concrete with visible tire tracks. The walls and ceiling are made of metal beams and corrugated panels. The lighting is dim, with some light coming from the far end of the aisle. A dark blue semi-transparent rectangle is overlaid in the center, containing the word "INDUSTRIAL" in white capital letters.

INDUSTRIAL

**CONWAY
& OWEN**

Featured Project

**PRINTPACK
MANUFACTURING
FACILITY**

BLOOMINGTON, IN

ARCHITECT

Warner Summers

PROJECT DESCRIPTION

MEP design services for a new, 250,000 square foot manufacturing and printing facility. The project design scope included heat recovery analysis, foam agent fire protection, smog hogs, compressed air system, solvent tank, low-voltage cabling, energy model calculations, and facility offices.

PROJECT FEATURE

This project is designed for LEED®-NC certification.



Industrial Project Sampling



BEST BUY LOUISVILLE SERVICE CENTER

LOUISVILLE, KY

MEP design for a new, 160,000 square foot computer service center for the Geek Squad division of Best Buy. The design included a computer repair center application with special humidity control and a dust collection system.

ATLANTIC SOUTHEAST AIRLINES (ASA) HANGER

COLLEGE PARK, GA

Design services for the renovation of an existing 165,000 square foot, multi-story aircraft hanger. Design scope included new variable volume air handlers to make use of existing chilled water/hot water systems that would condition new offices, new, state-of-the-art simulation and training facilities, 20-ton redundant computer room units sized for the new data center, new heating and ventilation to process areas of hanger, and new plumbing design. The project also required replacement of a chiller, pumps and computer room units and upgrading all existing controls to DDC.

MANSFIELD OIL COMPANY HEADQUARTERS EXPANSION

GAINESVILLE, GA

Design services for a 30,000 square foot expansion and complete interior fit-up; The project included a 3" raised flooring with modular wiring for a hi-tech furniture system and a new generator distribution system designed for the facilities critical systems.

THE TIRE RACK

SAVANNAH, GA

MEP design services for a new, 240,000 square foot warehouse and distribution facility, including conveyor system design.

TVA BULL RUN FOSSIL PLANT POWER AND LIGHTING UPGRADES

CLINTON, TN

Design for power and lighting upgrades to the Tennessee Valley Authority (TVA) Pre-Ground Limestone facility that housed a 2,354 square foot blower building and two silos. Design scope included area lighting for 24-hour operation and convenience power for welders and other maintenance equipment.



MITSUBISHI POWER SYSTEMS TURBINE MANUFACTURING PLANT

SAVANNAH, GA

Design services for a 230,000 square foot industrial manufacturing plant with 30,000 square foot of office space. The HVAC design included a central plant with chillers, cooling tower, variable primary flow chilled water system, air rotation units for plant cooling, heating and ventilation, process condenser water system, process chilled water system, dust collection system, and coating booth ventilation system. The plumbing design included air compressors, receivers and dryers associated with a compressed air system, argon tank farm associated with argon gas piping system, hydrogen tank farm and associated hydrogen gas piping system, and vacuum piping system. The electrical design included a 16 mega Watt electrical power plant for the manufacturing facility and office space. The system also included 1 mega Watt of generator backup system and 500 KVA UPS system for manufacturing process.



GOVERNMENT / INSTITUTIONAL

**CONWAY
& OWEN**

Government / Institutional

Featured Project

**RIVERBEND
CORRECTIONAL
FACILITY**

MILLEDGEVILLE, GA

ARCHITECT

KSGW Architects

PROJECT DESCRIPTION

A new 1,500-bed, medium security, 70 acre, privately run prison complex. The campus complex is approximately 290,000 square foot and includes 12 individual buildings, six of which house dorm-type and isolation style cells. Design includes multiple structures for administrative offices, support areas, visitor and lobby space, armory, large mailroom, and buildings to house infirmary space (including ER, X-ray, exam, infirmary and isolation rooms, nurse's station, pharmacy and dental care). Dining and kitchen space is equipped with professional cooler storage, hoods and cooking equipment, two dining halls accommodating over 200-seats, laundry facilities, contact visitor's area and non-contact visitor's areas, and commissary. Other buildings in the complex will house a library, chapel and vocational as well as general classrooms.

PROJECT FEATURE

The full prison system incorporates a campus-chilled water system with air cooled chillers; the design meets LEED® Silver design criteria.



Government / Institutional Project Sampling



GSA DEPARTMENT OF HOMELAND SECURITY

ATLANTA, GA

A five-story, 100,000 square foot office building shell and core with complete interior fit-up for the Department of Homeland Security including holding cells, court rooms, judges offices, administration, legal training, support facilities and 210 space parking deck.

HARTSFIELD-JACKSON ATLANTA INTERNATIONAL AIRPORT

ATLANTA, GA

Ventilation system design for a 900-foot construction tunnel that was needed for constructing the new International Terminal Passenger Tunnel. Design included two, 62,500 cfm outside air units (125,000 cfm total) to ventilate the tunnel to OSHA requirements; existing chilled and hot water services were used to maintain temperature.

MILTON CITY HALL

MILTON, GA

This 33,500 square foot judicial complex includes administrative offices, court room and council chambers, meeting space for residents and a town green for expansion of special events in Crabapple.

YELLOW RIVER WATER RECLAMATION FACILITY OPERATIONS BUILDING

LILBURN, GA

MEP design for a new, two-story building designed for LEED®-NC certification. The project scope included an IDF room, supply room, multiple conference rooms, training area, control room, private offices, and locker rooms.



HALL COUNTY DETENTION CENTER MEDICAL AND LAUNDRY FACILITIES

GAINESVILLE, GA

Renovation and expansion of the detention center's existing medical and laundry facilities. The scope included the dental laboratory, dental exam rooms, expansion and installation of new X-Ray equipment, and the expansion of the laundry facilities including new equipment.



GARDEN CITY TOWN HALL, POLICE, FIRE AND JUDICIAL COMPLEX

GARDEN CITY, GA

A new, 35,000 square foot judicial complex that includes City Hall, City Police and Fire Departments, Municipal Court and City Council. The Police Station is complete with staff offices, locker rooms, holding cells, sally port, investigative laboratory and canine work area.

ATLANTA FEDERAL PENITENTIARY RENOVATION

ATLANTA, GA

Renovation to the existing 100-year old historic prison. The project scope included the conversion of the prison water system from city water to a new, 1,000,000 gallon water tank with a domestic water pump building, resulting in a self-supporting water system should city water become unavailable. Work also included the conversion of numerous campus small cooling systems and central steam heating to a water-cooled chilled water plant with heating hot water. The central plant contains 1,800 tons of cooling capacity. Boilers are a dual design in order to utilize small boilers for domestic hot water production and large boilers for campus heating. The plant serves approximately 700,000 square foot.



K-12

**CONWAY
& OWEN**

Featured Project

ARABIA MOUNTAIN
HIGH SCHOOL

LITHONIA, GA

ARCHITECT

Perkins+Will

PROJECT DESCRIPTION

A new, state-of-the-art, 240,000 square foot high school includes a 600-seat performing arts theater/auditorium, 1,400-seat gymnasium, kitchen, cafeteria, technology center, library, 42-classrooms, 10-science labs, career technology labs, greenhouse, and a media center.

PROJECT FEATURE

Arabia Mountain is be the first public high school in the Southeast to achieve LEED® and a potential prototypical public school of the future. Project achieved LEED Silver certification.



K-12 Project Sampling



THE WALKER SCHOOL SCIENCE AND TECHNOLOGY BUILDING

MARIETTA, GA

Conway & Owen provided design services for the 35,000 square foot, three-story building which is the new home for The Walker School's middle and upper school science and technology programs. The facility includes four middle school science labs, dedicated labs for middle and upper school robotics, a middle school tech classroom, four biology/chemistry labs, two physics labs, a media tech suite, an outdoor classroom, faculty work suites and student collaboration/breakout areas.

CAMP CREEK MIDDLE SCHOOL SCIENCE LAB ADDITIONS

COLLEGE PARK, GA

Project consisted of a new 15,000 square foot addition to an existing science laboratory building with seven middle school science classrooms. Each classroom has multiple counter sinks and a laboratory hood with sink. Sinks are all plumbed via an acid waste system to an acid dilution tank located outside. Laboratory hoods are individually vented to the roof. Four prep rooms between classrooms have sinks and emergency showers/eye-wash stations.

PIKE ROAD K-8 SCHOOL

PIKE ROAD, AL

Project consisted of a 100,000 square foot, primary education school for grades K-8. Design included MEP, network systems, media retrieval systems, theatrical lighting, and sound systems. Features of the school include a gymnasium, auditorium, media center, full kitchen, and classrooms.

SAVANNAH COUNTRY DAY SCHOOL LOWER SCHOOL

SAVANNAH, GA

The new 52,500 square foot building will house grades PreK-5, the media center, science facilities, and administrative offices for the Lower School. This is first LEED®-NC school in Savannah.



AUBURN HIGH SCHOOL

AUBURN, AL

MEP design services were provided for a new school with three main wings: a fine arts wing, a physical education wing, and a main classroom wing.

FELLOWSHIP CHRISTIAN SCHOOL, HIGH SCHOOL AND COMMONS

ROSWELL, GA

Mechanical, electrical and plumbing design services for a new, 50,000 square foot high school building and a 28,000 square foot commons building. The new construction features a new high school classroom building plus the commons housing a dining hall with a full kitchen, cyber café, chapel, and performing arts theater.



DARLINGTON MIDDLE SCHOOL THATCHER HALL

ROME, GA

A new two-story, 65,000 square foot, \$21 Million private school building designed for LEED®-FS certification. The state-of-the-art facility features 18-classrooms, science laboratories, a wireless library/media center, a student commons, band and choral rooms, and a spacious assembly hall for gathering and dining purposes. The project will be using Integrated Classroom Lighting System with Daylight Harvesting.



LEED® & SUSTAINABLE

**CONWAY
& OWEN**

LEED® & Sustainable

Featured Project

**PALMETTO HEALTH
COUNCIL CENTER**

PALMETTO, GA

ARCHITECT

JKG Collaborative

PROJECT DESCRIPTION

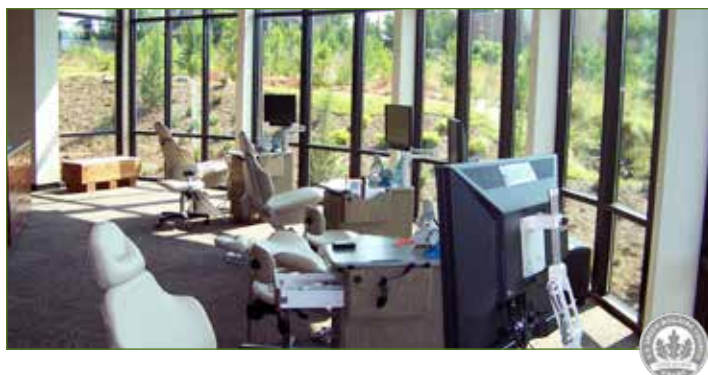
A new 22,000 square foot, three-story medical office building in Palmetto, Georgia. The new facility will offer a wide range of medical services to the public, including those uninsured. The new facility provides expanded space for primary care, pediatrics, OB-Gyn, dental, and mental health services. Palmetto Health Council will also locate their corporate headquarters and centralized services in the new building. The project will utilize a ground source heat pump system including a geothermal loop buried on the property and water-source heat pump units inside. Photovoltaic panels will be mounted on the roof so that a portion of the building's power usage will be offset.

PROJECT FEATURE

The project achieved LEED® Gold certification.



LEED® & Sustainable Project Sampling



DR. ELCHAHAL ORTHODONTICS

CUMMING, GA

First generation orthodontist fit-up designed to LEED® Silver specifications. The lighting system consists of daylight sensors to automatically adjust the light levels in the space depending on how much ambient light is available. Occupancy sensors were also used to help save energy when spaces are unoccupied. Moreover, energy efficient fluorescent and LED lighting was used to minimize the lighting load for the building. The mechanical systems consist of high-efficiency split systems with individual zone controls.

NORTH FULTON MEDICAL OFFICE BUILDING

ROSWELL, GA

A new three-story, 52,000 square foot medical office building. The design included shell and core and interior fit-up for an ambulatory surgical suite and an imaging center. The building is designed for LEED® Shell and Core.



GEORGIA WATER PROFESSIONALS

HEADQUARTERS MARIETTA, GA

A 12,000 square foot LEED® Gold certified renovation to serve as the new corporate headquarters for the GAWP. This project consisted of high efficiency constant volume roof top units that utilize both demand control ventilation and CO2 sensors, thereby reducing energy costs, as well as water reduction of over 40% over the baseline by using low flow fixtures, daylighting sensors, and workstation power strips with personal occupancy sensors. This project was designed using BIM/Revit 2010, and we were responsible for the fundamental commissioning of systems once construction was complete.



GREENVILLE HOSPITAL SYSTEM CHILD CARE FACILITY

GREENVILLE, SC

This LEED® certified childcare center is to be used for the staff of the Greenville Hospital System. The project scope included shell and core and interior fit-up. The mechanical system is connected to the hospital's central plant for chilled water and steam. Chilled water will serve as a central air-handling unit, and the air will be distributed via a medium pressure VAV system.



CONWAY & OWEN

ALPHARETTA, GA

Conway & Owen designed their facility to LEED®-CI Silver. The design included daylight harvest lighting control, occupancy sensors, waterless urinals, high efficient HVAC, showers and fitness room, employee amenities including a gameroom, LED lighting, daylighting views, and similar items to represent "we practice what we preach."

GS BATTERY

ROSWELL, GA

The new facility in Roswell, GA was the first commercial solar installation with storage in the State of Georgia. The design used the high-efficiency monocrystalline silicon solar cells and high-power solar modules in order to make solar-generated electricity cost-competitive with fossil fuels, using 30kW PV system with 15kW Battery. This was the first collaboration using technology from Suniva solar panels and GS Battery's technology for battery back-up power. This project was the first power grid in the State to be connected to any type of energy-storing solar installation and serves as a prototype for future installations.



MIXED-USE & RESIDENTIAL

CONWAY
& OWEN

Mixed-Use & Residential

Featured Project

**BROOKWOOD
CONDOMINIUMS**

ATLANTA, GA

ARCHITECT

Smallwood, Reynolds, Stewart, Stewart
& Associates

PROJECT DESCRIPTION

A new 20-story high-rise, mixed-use building in downtown Atlanta. The project is nearly 800,000 square foot and includes street-level retail, 219 condominium units, green deck amenities with a clubhouse, swimming pool, and five-level underground residential parking.

PROJECT FEATURE

Brookwood is Atlanta's largest residential project designed for LEED® certification.



Mixed-Use & Residential Project Sampling



ABERCORN CONDOMINIUMS

SAVANNAH, GA

A new 20,000 square foot, two-story building with retail on the ground level and twelve condominium units on the second level.



JONQUIL VILLAGE

SMYRNA, GA

A 500,000 square foot development mixed-use area that is over 12 acres, has 1,214 parking spaces, and features retail, condominium, and offices above structured parking.

PRESBYTERIAN VILLAGE

WATKINSVILLE, GA

A new 284,509 gross square foot independent living complex with a connected medical facility. The complex consists of two connected buildings and underground parking; Design services were shell, core and fit-up

GARDEN HILLS MULTI-STORY OFFICE BUILDING

ATLANTA, GA

A six-story, 135,000 square foot mid-rise office building with retail space and a six-level, 400-space parking deck.

LAKE MARTIN CONDOMINIUMS

DADEVILLE, AL

New 25 unit five-story and 40 unit five-story condominium buildings on Lake Martin.

COLLEGE OF CHARLESTON STUDENT HOUSING AND APARTMENT COMPLEX

CHARLESTON, SC

450,000 total project square foot of college housing, apartment complex, and 7-story parking deck. The apartment building is a 4-story building, can accommodate 199 students, and is built above retail space that includes a CVS Pharmacy that was design-built. The student housing is a 6-story, 420 person residential hall that is atop a cafeteria. These spaces include individual residence spaces and community spaces that include game rooms, lounge areas, home theaters, and laundries. Mechanical systems included water-source heat pump units with a central gas-fired boiler plant.



THE CHAMBLEE CENTER

CHAMBLEE, GA

A mixed-use five-story space consisting of a total of 167,000 square foot of hotel, event hall, bank, restaurants, food court, and white box tenant space, as well as 252,000 square foot of enclosed parking. Mechanical systems include ventilation for enclosed parking, standard split systems for office, retail, and restaurant spaces, grease exhaust and make-up air for restaurants, and variable refrigerant volume split systems for the hotel. Plumbing systems include grease interceptors for food court stalls and restaurants.



RETAIL

CONWAY
& OWEN

Featured Project

COLONIAL TOWN PARK

SMYRNA, TN

ARCHITECT

Infinity Architecture

PROJECT DESCRIPTION

A retail development including over 275,000 square foot of shell, site infrastructure, and interior build-out for anchors and vanilla box.

PROJECT FEATURE

Conway & Owen collaborated on the design of each store layout.



Retail Project Sampling



CNBC SARASOTA AIRPORT

SARASOTA, FL

This project was a 1,350 square foot second generation tenant fit-up for a retail establishment within the airport's existing concourse.

CVS DRUG STORE

SOUTHEAST UNITED STATES

MEP design services were provided for more than 50 new stores throughout Alabama, Florida, Georgia, Mississippi, and South Carolina.



GANDER MOUNTAIN DEPARTMENT STORE

MOORESVILLE, NC

A new 60,000 square foot building shell and interior design for an outdoor sporting goods store.

SUNSOUTH TRACTOR

AUBURN, AL

A 23,600 square foot project included retail, administrative, and warehouse space.



PARAGON AT SATELLITE

DULUTH, GA

A retail development including 160,000 square foot of shell, site infrastructure, food court, large anchor tenants, and vanilla box tenants of various sizes.

VILLAGE AT OLD TRACE

MARIETTA, GA

Multiple building and shell design for a new 50,000 square foot retail center. Additional interior build-out of several tenants was also included.

SHOGUN RESTAURANT

COLUMBUS, GA

A new 10,000 square foot Japanese eatery including ten Hibachi grills, each with dedicated grease exhaust hoods.

SHOPPES AT PALM POINTE

ORANGE BEACH, AL

Project included the design of multiple buildings totaling 190,000 square foot of retail center. 50,000 square foot of shell design and vanilla box fit-up for tenants such as: Movie Gallery, Coastal Couture, Beach Planet, Go Fish, Hershey's, Orange Beach Nails, Island Invites, Fantastic Fanz, and Guthrie's.

MACY'S DEPARTMENT STORE

ORLANDO, FL

A new 200,000 square foot, 2-story department store.

Engineering Excellence. Unmatched Client Service.



SPORTS & RECREATION

CONWAY
& OWEN

Sports & Recreation

Featured Project

**AUBURN UNIVERSITY
JORDAN-HARE
STADIUM RENOVATION**

AUBURN, AL

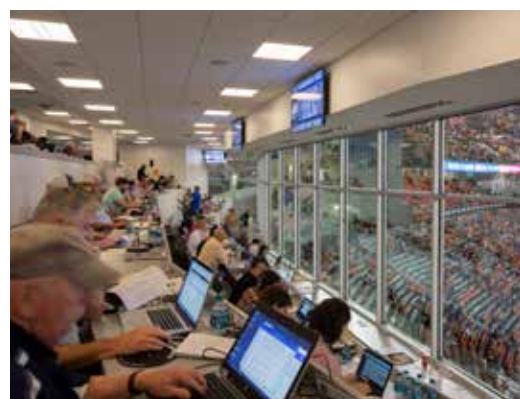
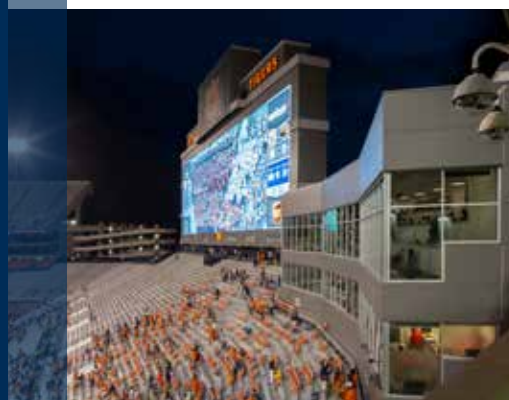
ARCHITECT
HOK

PROJECT DESCRIPTION

The project scopes for multiple projects throughout Jordan-Hare Stadium included MEP design for the renovated areas and the addition of fire protection systems for all levels. Areas of work included the Press Box, Media Areas, Concessions, Luxury Lounges, Covered Seating Areas, Club Levels, Concourses, and Locker Room. A complete lightning protection analysis was provided for the stadium structure.

PROJECT FEATURE

In addition to renovating the southwest corner of the stadium, a new press box and brand new Harbert Family Recruiting Center were included in the renovation project.



Sports & Recreation Project Sampling



ATLANTA BALLET CENTRE FOR DANCE EDUCATION

ATLANTA, GA

A 20,000 square foot facility for the Atlanta Ballet Company. This project achieved Gold-LEED® certification and includes five (5) large dance studios, costume and boutique shop, showers, locker rooms, administrative offices, prop construction, and warehouses.



CLEMSON INDOOR PRACTICE FACILITY AND CHILLED WATER UPGRADE

CLEMSON, SC

A state-of-the-art indoor sports turf field facility that included restrooms, training room, weight/rehab room, storage, and an entry lobby and also a chilled water upgrade that modified the existing air rotation units to accept chilled water coils and meet indoor temp requirements dictated by Clemson University. The project scope also include integration of the operation with the campus chilled water loop and coordination of LEED® efforts for the football operations complex design team.



AUBURN UNIVERSITY EQUINE ARENA

AUBURN, AL

A 100,000 square foot Equestrian Competition facility. Project research included evaluating the use of Photo Voltaic Technologies (PV) on the entire roof surface to supplement the power requirements for the facility during operation and to utilize net metering to sell power to Alabama Power while the facility is not in operation.

AUBURN UNIVERSITY ATHLETIC FACILITIES

AUBURN, AL

Multiple projects including Athletic Director's offices, lobbies, lounge spaces, conference rooms, team rooms, and a theater.

CYPRESS WOODS WELLNESS CENTER

HOUSTON, TX

A new, 65,000 square foot facility including bariatric, yoga, aerobics, spinning, weight room, physical therapy, childcare, nutrition, mind/body, locker rooms, showers, day spa, whirlpools, aquatics, demonstration kitchen, and indoor track.

AUBURN UNIVERSITY RAPTOR CENTER

AUBURN, AL

A collegiate training facility with amphitheater and mews.



BERT ADAMS SCOUT RESERVATION

COVINGTON, GA

A Scout Reservation complex with approximately 54,000 square foot of indoor space and over 1,900 square foot of covered outdoor space. The complex consists of a dining hall, pool pavilion, nature center, archery/BB Range, shower house, program center, covered gathering pavilions, and tent pavilions. The dining hall is two-stories with seating for over 600 and offers a full commercial kitchen. The lower level of the dining hall has staff residences, conference rooms, laundry, and a retail store. The pool pavilion houses locker rooms, offices, and the pool equipment room. The Nature Center offers classroom space and animal cases. The Program Center is 16,000 square foot and has classroom space, a pottery area with kiln, offices, and covered pavilions. The Archery/BB Range has 24 covered lanes with office, storage, and restrooms.

PARAGON GOLF FACILITY

DULUTH, GA

A new multi-tiered golf range including outdoor lighting, electric ball retrieval/conveyor system, automatic tees, concessions, and indoor food court.

Engineering Excellence. Unmatched Client Service.

CONWAY & OWEN

Georgia | Alabama
www.conway-owen.com

MECHANICAL

ELECTRICAL

PLUMBING

FIRE PROTECTION

AUDIO-VISUAL

ACOUSTICS