

Project Sampling Brochure



CONWAY & OWEN

ALPHARETTA, GA (HQ)

1455 Bluegrass Lakes Parkway

Alpharetta, GA 30004

p (678) 350-9000

f (678) 350-9010

AUBURN, AL

1100 South College Street

Suite 203

Auburn, AL 36832

p (334) 826-8858

f (334) 826-8859

info@conway-owen.com

POINT-OF-CONTACTS

CHARLES CONWAY, P.E., LEED AP

CEO / Managing

Principal Electrical Engineer

cconway@conway-owen.com

WAYNE OWEN, P.E.

CFO / Managing

Principal Mechanical Engineer

wowen@conway-owen.com

JOE SHAFFER, P.E., LEED AP

Principal Mechanical Engineer

jshaffer@conway-owen.com

KEVIN FINLAY, P.E.

Principal Mechanical Engineer

kfinlay@conway-owen.com

KEN BOVE

Principal Mechanical Designer

kbove@conway-owen.com

ANNETTE PETERSON

Associate Principal Electrical Designer

apeterson@conway-owen.com

KEN LANGLEY

Associate Principal Senior Electrical Designer

klangley@conway-owen.com

DOUG PENDER, LEED AP

Associate Principal Electrical Designer

dpender@conway-owen.com

KUNG VEN, P.E., LEED AP

Director of Engineering

kven@conway-owen.com

CHUCK DOWD, P.E.

Director of Technology

cdowd@conway-owen.com

Company Profile



At a Glance



Today, Conway & Owen holds Professional registrations in 38 states. Four Principals now own and manage the 38-employee company including an office in Auburn, Alabama.

The firm employs licensed Professional Engineers and LEED® accredited industry leaders affiliated with industry specific organizations.

Conway & Owen has built a robust design portfolio with experience in virtually every commercial market, while striving to stay versed in emerging technologies and sustainability practices.

A large majority of projects are with repeat clients, which is a reflection of the firm's dedication to quality and customer care.

The firm actively supports community and industry organizations and has developed a mentoring program for employed junior and young engineers.

In sixteen years, Conway & Owen has grown from a two-man consulting firm to a recognizable company with an industry presence and design work across the Country.

Delivering unmatched client service and high quality results.

Our mission is to be committed to providing a higher level of service, quality, and expertise that exceeds our clients' expectations and allows our company to enjoy a unique and rewarding environment that "breaks-the-mold" in the engineering industry. This will be accomplished by focusing on the individual employee and understanding the importance of family, fun, and personal satisfaction, thus resulting in a profitable and rewarding experience.



ORGANIZATION

Conway & Owen, Inc. is a team-structured and client-focused consulting firm headquartered minutes outside metro-Atlanta, in Alpharetta, Georgia. The Auburn, Alabama office is located on the outskirt of Auburn University. Both offices provide the following engineering consulting services:

- Mechanical
- Electrical
- Plumbing
- Fire Protection
- Low-Voltage
- Lighting Design



LEADERSHIP TEAM

Conway & Owen upholds the highest level of engineering standards and ethics while providing accurate and reliable design services. The firm's principals lead by focusing on maintaining proper standards and ethics through their project involvement to insure quality, along with managing the in-house peer reviews.

Our “principal-involved” team approach to engineering solutions has ensured that hundreds of clients achieve their ultimate project vision. Design teams are a balance of disciplines that collaborate from design through construction. A QC review is performed by principals at multiple stages throughout design to ensure quality design deliverables.



CHARLES CONWAY, P.E., LEED AP
CEO / Managing
Principal Electrical Engineer
34 years of experience
cconway@conway-owen.com



WAYNE OWEN, P.E.
CFO / Managing
Principal Mechanical Engineer
26 years of experience
wowen@conway-owen.com



JOE SHAFFER, P.E., LEED AP
Principal Mechanical Engineer
20 years of experience
jshaffer@conway-owen.com



KEVIN FINLAY, P.E.
Principal Mechanical Engineer
17 years of experience
kfinlay@conway-owen.com



KEN BOVE
Principal Mechanical Designer
16 years of experience
kbove@conway-owen.com



KEN LANGLEY
Associate Principal Senior Electrical Designer
36 years of experience
klangley@conway-owen.com



ANNETTE PETERSON
Associate Principal Electrical Designer
30 years of experience
apeterson@conway-owen.com



DOUG PENDER, LEED AP
Associate Principal Electrical Designer
13 years of experience
dpender@conway-owen.com



WE ARE GREEN

The founders of Conway & Owen, Charles Conway and Wayne Owen, were interested in sustainability practices early on and support the growth of sustainable designs.

Holding sustainability at the forefront of design, we work to integrate constructability with emerging technologies while preserving a sharp focus on sustainability. Examples of frequently utilized sustainability practices within project deliverables include Life Cycle Analysis, design for LEED certification, design in accordance with EarthCraft standards, the use of high-efficiency HVAC systems such as variable-stage chillers and those with variable refrigerant flow (VRF), low-flow fixtures, LED and sensor-driven daylight harvesting lighting, and multi-level controls. Conway & Owen has seven LEED Accredited Professionals on staff who serve as ambassadors of all things green.

AFFILIATIONS

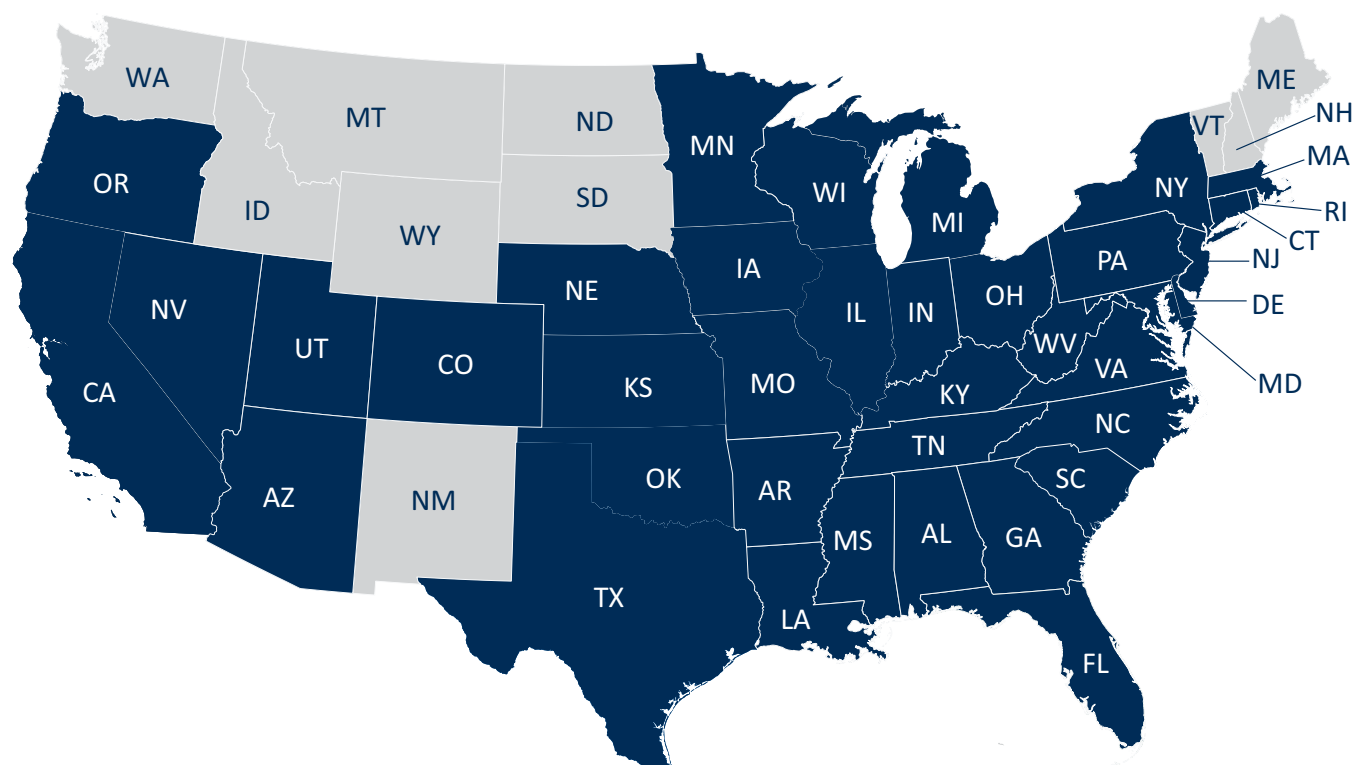
Conway & Owen is proud of their affiliation with the following organizations locally and nationally.



38
STATES

Kansas
Michigan
Virginia
Wisconsin
Utah
Massachusetts
Washington, D.C.
West Virginia

CONWAY & OWEN currently holds professional licensing in the **blue shaded states**.



MARKETS

Conway & Owen's more than 100 years of combined experience has served nearly every market within the CRE Industry. Our clients include architects, developers, owners and construction professionals. Project markets include:

- Commercial Office
- Correctional
- Government
- Healthcare
- Higher Education
- Hospitality
- Industrial
- K-12
- Mission Critical
- Mixed-Use
- Municipal
- Retail
- Sports & Recreation



Commercial Office



Commercial Office

Featured Project

700 NORTHPARK

ATLANTA, GA

ARCHITECT

**Smallwood, Reynolds, Stewart,
Stewart & Associates**

PROJECT DESCRIPTION

A new 486,000 SF office building and a 570,000 SF parking deck. The project is the third and final of the office buildings on campus to be added, a leading development in North Atlanta. The project includes a restaurant, retail, and fitness center in addition to office space.

PROJECT FEATURE

Project is designed to achieve
LEED Silver Certification.



Commercial Office Project Sampling



TWELVE24 OFFICE TOWER

ATLANTA, GA

A new, 16-story, 334,000 SF Class-A office tower with 11,000 SF of ground floor retail and restaurants as part of 3.94-acre site that sits in the heart of Atlanta's Central Perimeter and will be directly connected to the Dunwoody Marta Station.



HALCYON POINT BUILDINGS B AND C

MONTGOMERY, AL

Two three-story, 75,000 SF Class "A" office building with core and shell. Additional projects included the second floor tenant fit-ups for Morgan Keegan and the Alabama Housing and Financing Authority.



JACKSON HEALTHCARE CORPORATE EXPANSION

ALPHARETTA, GA

A 262,000 SF, eight-story office building addition with an additional 9th floor partial attic. Addition includes a seven-story parking deck and an attached three-story, 37,930 SF amenity building with dining, full kitchen, indoor pool, fitness center, and locker room with showers.

HOME DEPOT OFFICES

MULTIPLE LOCATIONS

Multiple corporate office fit-ups at various metro Atlanta area locations for the Home Depot corporation; fit-up size ranged from 10,000 to 100,000 offices with open concept, conference space and enclosed offices.



THYSSENKRUPP AMERICAS HEADQUARTERS

MARIETTA, GA

A 309,000 SF, 11-story office building with 6-level parking deck. The lowest two levels of the parking deck are enclosed.

JACKSON HEALTHCARE CORPORATE OFFICES

ALPHARETTA, GA

A 180,000 SF, build-to-suit corporate office building featuring executive and administrative offices; IT department and data center; full kitchen and dining facilities; fitness center and racquetball court; and game room. Design includes a five-story atrium with smoke control and 2N UPS and generator distribution.

Commercial Office Project Sampling

3354 PEACHTREE

ATLANTA, GA

A new 44-story, skyline-defining, mixed-use tower will feature 560,000 SF of Class AA office space (levels 5-26), 62 ultra-luxury condominiums (levels 28-44), and 11,000 SF of street-level retail, above-market parking, and a suite of modern amenities.

COX ENTERPRISES, 1001 PERIMETER SUMMIT

ATLANTA, GA

A 70,000 SF of multiple projects that included the second generation tenant fit-up of an existing building. The building spaces included offices, conference rooms, training rooms, copy/prINTER room, and IDF closets.

999 PEACHTREE CENTRAL PLANT RENOVATION

ATLANTA, GA

The project consists of designing the replacement, reconfiguration, and optimization of the water-cooled centrifugal chillers, condenser water pumps, and chilled water pumps, addition of a waterside economizer heat exchanger, and update of the controls system to incorporate the new equipment.

AVALON 8000

ALPHARETTA, GA

A nine-story, Class AA, 228,893 SF office building with retail and restaurant space on the first floor and a five-story parking deck. The facility sits on a four-acre site and is currently the tallest building in the submarket and is a part of the mixed-use, Avalon 86-acre development. Conway & Owen has provided multiple retail and office fit-ups after the design of the core and shell of the building.

AVALON 10000

ALPHARETTA, GA

10000 Avalon is the second and final office building in Avalon, a leading mixed-use development in North Atlanta. The project includes a 10-story 260,000 SF office building, 3-level 208,500 SF enclosed parking deck and a 4-level 143,000 SF open parking deck, and fitness center.

1180 PEACHTREE

ATLANTA, GA

A 20-story, multi-tenant fit-up within a 41-story high-rise office building in downtown Atlanta; Tenants include law firms, design and creative companies, technology and real estate and development companies.

CHICK-FIL-A CORPORATE HEADQUARTERS

COLLEGE PARK, GA

A 200,000 SF multiple interior fit-up design project including IT Department, fitness center, Finance Department, simulation kitchens, and administration throughout several different buildings on the Chick-Fil-A headquarters complex.

GREYSTONE POWER HEADQUARTERS

PAULDING COUNTY, GA

The new 200-acre corporate campus will consist of separate facilities that will include an administration building, an operations & engineering building, a warehouse, a fuel island, vehicle storage, a vehicle maintenance building. The campus is being designed to include a lit pedestrian walkway, an outdoor amenity area, a credit union and cashiering department, and an employee fitness center.

CORPORATE CENTER V OFFICE BUILDING CORE & SHELL

TAMPA, FL

A 250,000 SF eight-story speculative high-rise office building and an open air 280,000 SF parking deck.

GARDEN HILLS OFFICE, RETAIL, AND PARKING DECK

ATLANTA, GA

A new core & shell design of a 120,000 SF speculative office building with 21,000 SF of lobby and retail space, a 4,000 SF roof terrace and an 80,000 SF, 4-level parking deck.

HOLDER CONSTRUCTION CORPORATE OFFICES

ATLANTA, GA

A multi-level interior fit-up throughout a 100,000 SF corporate office building. All five floors of this building, including two floors for Holder Construction, were designed to be LEED®-CI certified.

TIAA-CREF SOUTHERN REGION CAMPUS

CHARLOTTE, NC

Over 1,000,000 SF full-service corporate campus. The campus included several buildings and parking decks.

REGUS OFFICES

MULTIPLE LOCATIONS

Design for ready-to-occupy office and business center space, executive suites and corporate offices. Office amenities include private, shared or open-plan workspaces, fully furnished and customizable spaces, 24-hour secure access; business lounges, video communications and advanced technology.

Correctional



Featured Project

**RIVERBEND
CORRECTIONAL
FACILITY**

MILLEDGEVILLE, GA

ARCHITECT

KSGW Architects

PROJECT DESCRIPTION

A new 1,500-bed, medium security, 70 acre, privately run prison complex. The campus complex is approximately 290,000 SF and includes 12 individual buildings, six of which house dorm-type and isolation style cells. Design includes multiple structures for administrative offices, support areas, visitor and lobby space, armory, large mailroom, and buildings to house infirmary space (including ER, X-ray, exam, infirmary and isolation rooms, nurse's station, pharmacy and dental care). Dining and kitchen space is equipped with professional cooler storage, hoods and cooking equipment, two dining halls accommodating over 200-seats, laundry facilities, contact visitor's area and non-contact visitor's areas, and commissary. Other buildings in the complex will house a library, chapel and vocational as well as general classrooms.

PROJECT FEATURE

The full prison system incorporates a campus-chilled water system with air cooled chillers; the design meets LEED® Silver design criteria.



Correctional Project Sampling



CENTRAL PDC RENOVATION AND EXPANSION

CADWELL, GA

The project scope includes renovation of an existing 26,978 SF facility and design for two new 12,850 SF housing units; a new 8,400 SF gymnasium building; a new 4,500 SF vocational education building; 3,500 SF of medical offices; and outdoor recreation space.

HALL COUNTY DETENTION CENTER

GAINESVILLE, GA

Renovation and expansion of the existing medical and laundry facilities. The scope included the dental laboratory, dental exam rooms, expansion and installation of new X-Ray equipment, and the expansion of the laundry facilities including new equipment.



HARALSON COUNTY DETENTION CENTER RENOVATION AND EXPANSION

BUCHANAN, GA

The renovation and expansion of an existing boot camp and detention center project includes conversion of dorm type rooms to cells; conversion of multi-purpose areas to dorm type rooms with toilets and showers; renovation of HVAC systems; existing kitchen, laundry, medical and intake areas; and additions including a 3,600 SF admin building and six new outdoor recreation areas.

SCSVP PRISON RENOVATION AND EXPANSION

COLUMBIA, SC

A 126,055 SF renovation and expansion of an existing facility. The renovation scope of the project totals 26,600 SF and includes renovations to the Programs Building, Admissions, Laundry and Warehouse, and Maintenance facility. The addition scope of the project totals 99,900 SF and includes a new housing building; an administration building; and a medical building.

FORT BENNING STUDIES

FORT BENNING, GA

Total of three projects that included the expansion of three buildings on the campus; Armor Vehicle Facility, Classroom Facility, and the Dining Hall Facility. Designs were coordinated with State and Military Regulations.

PAULDING COUNTY ADULT DETENTION & LAW ENFORCEMENT CENTER

PAULDING COUNTY, GA

A new, 255,600 SF facility that houses Paulding County's Police and Law Enforcement & Judicial branch includes admin space with offices, storage, support, jail.

Correctional Project Sampling

LOVEJOY DETENTION CENTER POD “D” ADDITION

LOVEJOY, GA

The project consisted of a two-story building addition which included cells, public areas, general office spaces, and public restrooms. Addition includes a dayroom, cells, offices, control room, and support spaces.

EASTMAN YOUTH DEVELOPMENT CAMPUS, MEDICAL FACILITY RENOVATION AND EXPANSION

EASTMAN, GA

Renovation of 11,000 SF of an existing correctional campus medical facility and a 2,500 SF expansion at the 330 capacity Campus; renovation and expansion design services included design of non-invasive exam rooms, administrative offices, dental exam rooms and general office space; The project scope also included a new, constant volume rooftop unit as well as security grilles and penal type plumbing fixtures in the detention and isolation cell areas.

FORT BENNING BUILDING 358 SERVER FACILITY RENOVATION

FORT BENNING, GA

The project consists of a 3,500 SF, single-story building on post that is currently used as a data center. The building was originally a gymnasium and has been converted with a raised floor system in the data rooms areas.

JACKSON COUNTY JAIL

JEFFERSON, GA

Prepared construction shop drawings for the plumbing systems for the 120,000 SF county jail facility.

MADISON COUNTY JAIL EXPANSION

DANIELSVILLE, GA

The expansion of an existing building and a new two-story cell housing building. The new building houses 12-new cells, storage rooms, shower, and other support areas. The new cell pod will tie into exiting observation tower. The scope also includes rework of sally port, front office area, and minor work kitchen area.

ATLANTA FEDERAL PENITENTIARY RENOVATION

ATLANTA, GA

Renovation to a 100-year old prison. Scope included the conversion of the prison water system from city water to a new, 1,000,000-gallon water tank with a domestic water pump building, resulting in a self-supporting water system should city water become unavailable. Work included the conversion of cooling systems and central steam heating to a water-cooled chilled water plant with heating hot water.

METRO STATE PRISON CONVERSION

ATLANTA, GA

Project consisted of the conversion of an existing facility to a building that met current energy code and security standards. Adding Programs and Gym to Renovation. Space includes inmate housing, kitchen, laundry, gym, and other support areas. Work also included an addition of dorm pods and training spaces, GED classrooms, medical and counseling facilities.

GDOC SMITH TRANSITIONAL CENTER DORMITORY ADDITION, SMIT-TC

CLAXTON, GA

a detached +/- 9,000 SF Minimum Security 100-bed open floor concept dormitory addition. Based upon the original constructed dormitory design, we anticipate that the new dormitory building will be detached. The Project's Scope of Work involves two (2) interconnected 50-bed open floor plan dormitory, each with individual Day Rooms, Inmate Toilets and Showers, and a common central core Control Room. The Design Professional will need to assess existing utilities (water, sewer, power, and communications), and existing security infrastructure as related to this project and it's required design needs.

Government



Featured Project

**GENERAL SERVICES
ADMINISTRATION
(GSA), THE CAY
BUILDING**

SAVANNAH, GA

ARCHITECT

Smallwood, Reynolds, Stewart,
Stewart & Associates

PROJECT DESCRIPTION

A new, 60,000 SF six-story office building on top of an existing below ground parking deck. The project scope consisted of HVAC, plumbing, and electrical systems design for the shell and core and interior fit design for GSA USAO (United States Attorney's Office) in Savannah, Georgia. HVAC systems consisted of floor-by-floor self-contained air conditioning units serving VAV medium pressure distribution. The electrical utilities required a building internal power company vault due to site space restrictions.

PROJECT FEATURE

The building design was based on to blend in with the look and feel of the historic district of Savannah, which took working with local organizations and collaborating with the project team.



Government Project Sampling



GENERAL SERVICES ADMINISTRATION DEPARTMENT OF HOMELAND SECURITY

ATLANTA, GA

A five-story, 100,000 SF office building shell and core with complete interior fit-up for the DHS including holding cells, court rooms, judges offices, administration, legal training, support facilities and 210 space parking deck.



THE MEXICAN CONSULATE GENERAL

ATLANTA, GA

The interior fit-up of a three-story, 45,000 SF building to house the U.S. Mexican Consulate-General and supporting offices.



HARTSFIELD-JACKSON ATLANTA INTERNATIONAL AIRPORT

ATLANTA, GA

Ventilation system design for a 900-foot construction tunnel that was needed for constructing the new International Terminal Passenger Tunnel at Hartsfield-Jackson International Airport; Design included two, 62,500 cfm outside air units (125,000 cfm total) to ventilate the tunnel to OSHA requirements; existing chilled and hot water services were used to maintain temperature.



MAXWELL AIRFORCE BASE

MAXWELL AFB, AL

Complete renovation/conversion of an existing 2-story 24,000 SF dormitory to a classroom building for evasion and combat after captive training.

FEDERAL BUREAU OF INVESTIGATIONS

COLUMBUS, GA

A 7,900 SF Tenant Fit-Up including open office area, private offices, general conference rooms, small training room, copy/printer room, and computer cabling (IDF) closets.

GENERAL SERVICES ADMINISTRATION UNITED STATES CITIZENSHIP AND IMMIGRATION SERVICES

ATLANTA, GA

Multi-level first- and second-generation interior fit-up design including court rooms, holding cells, general office spaces, Data Center and related support facilities. The total was 44,000 SF of space.

UNITED STATES SECRET SERVICE

ALBANY, GA

One floor Tenant Fit-Up for the Secret Service office in Albany, GA. The scope included locker rooms, conference rooms, holding cells, interview room, breakroom, equipment closet and administrative offices.

Government Project Sampling

FORT BENNING STUDIES

FORT BENNING, GA

Total of three projects that included the expansion of three buildings on the campus; Armor Vehicle Facility, Classroom Facility, and the Dining Hall Facility. Designs were coordinated with State and Military Regulations.

FORT BENNING BUILDING 358 SERVER FACILITY RENOVATION

FORT BENNING, GA

The project consists of a 3,500 SF, single-story building on post that is currently used as a data center. The building was originally a gymnasium and has been converted with a raised floor system in the data rooms areas.

ENVIRONMENTAL RESOURCE SHELTER

SUNNY POINT, NC

Design of a new environmental resources shelter for military vehicles storage and a conditioned warehouse that is located on the Military Ocean Terminal in Sunny Point, North Carolina (MOTSU). The total area of the building is 6,400 SF.

UNITED STATES DEPARTMENT OF LABOR ATLANTA JOB CORPS RELOCATION

COLLEGE PARK, GA

Relocation of the Atlanta Job Corps Center. Space included a welcome center, administration spaces, student services department, classrooms, welding lab, child development center, cafeteria, recreation space, dormitories, maintenance and storage, and a central plant.

ROBINS AIR FORCE BASE C-130 PARTS STATION

WARNER ROBINS, GA

Design of a single-story, stand-alone building for use as a storage and maintenance facility on the Robins Air Force Base. The total area of the building is 5,000 SF.

ROBINS AIR FORCE BASE PURGE STATION

WARNER ROBINS, GA

A new 2,400 SF facility to support Robins Air Force Base personnel that are associated with the fuel purge operations. The building includes offices, locker facilities, a kitchen, and staff operations areas.

UNITED STATES FISH WILDLIFE

WAPANOCCA, AR

A 2,500 SF new building for the U.S. Fish and Wildlife Services that included the design for an exhibit area; three offices; conference room; and supporting offices. The energy use exceeds ASHRAE 90.1 by 30%, and the plumbing includes the use of rainwater for the toilets.

UNITED STATES FISH WILDLIFE

BALD KNOB, AR

A 2,500 SF, new building for the U.S. Fish and Wildlife Services; design scope included design for exhibit areas; four main offices; conference room; and copy and tech support rooms; The energy use exceeds ASHAE 90.1 by 30% and the plumbing includes the use of rainwater for the toilets.

C-130 FOM FACILITY

ROBINS AIR FORCE BASE

The project consists of a 5,000 SF, single-story standalone building for use as storage and maintenance facility.

GSA UNITED STATES CITIZENSHIP AND IMMIGRATION SERVICES

ATLANTA, GA

Multi-level first- and second-generation interior fit-up design including court rooms, holding cells, general office spaces, Data Center and related support facilities. The total was 44,000 SF of space.

NORTH FULTON COMMUNITY CHARITIES (NFCC) TRAINING/COUNSELING BUILDING

ROSWELL, GA

A 17,600 SF two-story office and building with administration areas and classroom/meeting spaces.

RESACA BATTLEFIELD VISITOR'S CENTER

RESACA, GA

A new Silver LEED®-NC Certified Historical Civil War Battlefield Visitors Center. The project is approximately 7,000 SF and includes an interpretive museum, theater, restroom facilities, administrative offices, gift shop and parking for multiple sizes of vehicles.

Healthcare



Featured Project

**MURFREESBORO
MEDICAL OFFICE
BUILDING & SURGERY
CENTER**

MURFREESBORO, TN

ARCHITECT

Kennedy & Associates, Inc.

PROJECT DESCRIPTION

A new 75,000 SF, three-story core and shell. Additional tenant fitup projects within the building include: ASC, radiology, clinical, physical therapy, sleep center, restorative health, plastic surgery, and home care solutions. The building utilizes packaged direct expansion variable airvolume roof top units. Additional work included a 16,000 SF ambulatory surgical suite with four ORs and support for a certified outpatient center. The facility performs EKGs with direct access to laboratory and radiology laboratories.

PROJECT FEATURE

The center is conditioned with a chilled water VAV rooftop unit with HEPA filtration. Humidity is controlled via steam humidification. Plumbing systems include RO filtration for autoclave sterilizers and water softeners. Electrical generator and emergency distribution is provided for life safety, critical systems, and equipment branches to comply with the NEC517 and NFPA 99.



Healthcare Project Sampling



JOHNS CREEK MEDICAL OFFICE BUILDING

JOHNS CREEK, GA

A 93,500 SF, 4-story medical office building shell and core.



PALMETTO HEALTH COUNCIL CENTER

PALMETTO, GA

A new 22,000 SF, three-story medical office building that offers a wide range of medical services. The project utilizes a ground source heat pump system including a geothermal loop buried on the property and water-source heat pump units inside. PV panels will be mounted on the roof so that a portion of the building's power usage will be offset. This project achieved LEED Gold status.



LIFEPOINT

CHARLESTON, SC

A new two-story, build-to-suit building that is over 50,000 SF. The facility is for a certified organ procurement organization for recovery services in South Carolina. The project included a shell and core and interior build-out including three operating rooms and support areas. The center is conditioned with VAV rooftop units with HEPA filtration. Humidity is controlled via steam humidification. Medical gas systems provide oxygen, medical air, nitrous oxide, and medical vacuum.

GRADY MEMORIAL HOSPITAL RENOVATIONS

ATLANTA, GA

Renovations for a 953-bed City of Atlanta medical center. The Scope of this project was over 12,000 SF of fit-up and renovation including MRI, CT, X-ray, Fluoroscopy, and exam and support areas. HVAC systems include chilled water VAV, chilled water constant volume and DX split systems. Electrical systems include integration into existing emergency backup power.

LOUISIANA HEART CENTER

CHALMETTE, LA

A new 54,000 SF build-to-suit healthcare facility for the Louisiana Heart Center. The scope included shell and core and interior fit-up design for doctor's offices, exam rooms, procedure rooms, nuclear medical lab, ultrasound, clinic infusion therapy, and other support areas for heart surgical specialists.

ATHENS REGIONAL HOSPITAL

ATHENS, GA

Design services were provided for the renovations to existing 4th floor of the hospital.

Healthcare Project Sampling

BREAST CARE SPECIALISTS

ATLANTA, GA

A 20,000 SF, second generation interior medical fit-up design for a medical group. The design includes two MRI spaces with dedicated split systems and process chillers, four mammography rooms, six ultrasound rooms, exam rooms, and a medical procedure room.

KAISER PERMANENTE BROOKWOOD MATERNAL FETAL MEDICINE BUILDOUT

ATLANTA, GA

A 1,050 SF of six new offices, expansion of an exam room, the addition of a restroom, the addition of GUS room, as well as necessary auxiliary space.

ALCON CLEAN ROOM LABORATORY

JOHNS CREEK, GA

The project consists of the interior fit-up design of a Class 10,000 clean room and associated support spaces.

CHILDREN'S HEALTHCARE OF ATLANTA

ATLANTA, GA

A tenant fit-up project scope included exam rooms, procedure rooms, and childcare area.

NORTH FULTON MEDICAL OFFICE BUILDING

ROSWELL, GA

A new 54,000 SF, three-story medical office building. Project included shell & core, and interior fit-up for ambulatory surgical space, imaging, and other clinical spaces. The building utilizes packaged direct expansion variable air-volume roof top units and also includes energy modeling and fundamental commissioning and is pursuing LEED® certification.

CYPRESS WOODS WELLNESS CENTER

HOUSTON, TX

A new \$18,000,000, 65,000 SF two-story facility that includes a spa, pool, locker room facilities, open exercise area, bariatric gym, spinning, childcare, physical therapy, multipurpose conference facility, and a demonstration kitchen.

HENRY MEDICAL CENTER DIAGNOSTIC IMAGING SERVICES

STOCKBRIDGE, GA

The building use was altered to house a 64-Slice CT, MRI, Mammography, X-ray, bone density, and ultrasound. The building services were upgraded or replaced to meet the new demand and requirements of an imaging suite.

NORTHSIDE FORSYTH MEDICAL OFFICE BUILDING

CUMMING, GA

A New, five-story building as part of the Northside Hospital System.

CROSSVILLE MEDICAL OFFICE BUILDING

CROSSVILLE, TN

A new 40,000 SF, two-story medical office building core and shell.

EMORY UNIVERSITY HOSPITAL 4C CARDIAC OBSERVATION AREA EXPANSION

ATLANTA, GA

The project consists of the renovation to the existing Cath Lab suite on the 4th Floor and the Tunnel Level Cath lab suite.

CLAYTON COUNTY HEALTH CENTER

CLAYTON COUNTY, GA

Over 70,000 SF of interior fit-up design consisting of the conversion of an existing industrial manufacturing facility to a full-service community health center including medical exam rooms, immunization, labs, dentist exam rooms, infectious diseases, classrooms, and other support areas. The project included emergency stand-by power for telecommunications and approximately 25% of the facility.

FOREST GENERAL HOSPITAL

HATTIESBURG, MS

Renovation of multiple existing Cath Labs & MRIs

OPELIKA MEDICAL OFFICE BUILDING

OPELIKA, AL

A 6,000 SF medical office building including shell and interior fit-up designs.

PRESBYTERIAN VILLAGE ATHENS

WATKINSVILLE, GA

A new 284,509 gross SF independent living complex with a connected medical facility; the complex consists of two connected buildings and underground parking; Design services were shell, core and fit-up.

GEORGIA HAND MEDICAL OFFICE BUILDING

ATLANTA, GA

A 50,000 SF, 3-story office medical building with a 24,500 SF parking deck.

Higher Education



Higher Education

Featured Project

CLEMSON UNIVERSITY
SCHOOL OF NURSING

GREENVILLE, SC

ARCHITECT

Batson Associates, inc.

PROJECT DESCRIPTION

A new, four-story, 79,000 SF, 800-student school of nursing in collaboration with the Greenville Healthcare System (GHS) is a clinical learning and research building that offers a hospital-like environment with virtual reality IV simulators and high-fidelity human patient simulators, classrooms, and offices.

PROJECT FEATURE

The combined simulation laboratories in the USC School of Medicine Greenville and Clemson University Nursing building will represent one of the largest simulation centers in the Country at approximately 30,000 SF.



Higher Education Project Sampling



CHATTAHOOCHEE TECHNICAL COLLEGE HEALTH SCIENCES BUILDING

MARIETTA, GA

The three-story, 80,000 SF space includes a faculty area, a covered employee roof terrace on the third floor of the building, student medical technology classrooms, and other diverse coursework.



GEORGIA INSTITUTE OF TECHNOLOGY QUAD CENTER CAFÉ

ATLANTA, GA

A new, 3-story food court and gathering place located in the Biotechnology Complex.

WEST GEORGIA TECHNICAL COLLEGE NEW CARROLL COUNTY CAMPUS

CARROLLTON, GA

A new state-of-the-art 165,000 SF technical campus that includes admin and faculty offices, student services, library, IT/Instructional support, multipurpose classrooms, economic development, plant maintenance, and facilities operations. The campus will also feature surface parking and a CDL truck driving range.



AUBURN UNIVERSITY GRADUATE BUSINESS BUILDING

AUBURN, AL

The new, five-story, 105,000 SF facility will house flat-flexible and case study classrooms; a flexible studio lecture hall; an Innovation Lab; student study pods and team areas; various conference and reception style areas; and administrative offices for the college's MBA program. It will also house the college's Operations and Information Services groups.



AUBURN UNIVERSITY KINESIOLOGY BUILDING

AUBURN, AL

A new 3-story, 60,000 SF laboratory building for the Scientific Study of Human Movement. The HVAC system utilizes the University's district energy plant for the chilled water source. The project achieved LEED Silver Certification.

Higher Education Project Sampling

CHATTAHOOCHEE TECHNICAL COLLEGE ACADEMIC BUILDING

CANTON, GA

A new 62,500 SF academic facility that serves as a satellite campus of ATC. The project includes 350 parking spaces and houses classroom space for ten fields of study. It was designed for LEED Silver certification.

KENNESAW STATE UNIVERSITY COLLEGE OF THE ARTS (COTA) CHASTAIN POINTE SUITE 115

KENNESAW, GA

Chastain Pointe is a light industrial park owned by the Kennesaw State Foundation and utilized by various departments of KSU. It consists of three multi-suite buildings. Suite 115 is 20,000 SF is being converted from a unconditioned warehouse with office space to studios for painting/drawing and printmaking, faculty/student gallery space, faculty offices/studios, and storage.

EMORY UNIVERSITY CALLAWAY BUILDING ENERGY MODEL & RENOVATION

ATLANTA, GA

Scope of work includes the development of an energy model that consists of Emory University building lighting standards and identifies building envelope improvement options to improve overall EUI. Project also included a renovation of the existing building after the energy study was reviewed and identified areas of improvement including window replacements on the south wing, building envelope, system upgrades, and an aesthetic interior renovation.

ATLANTA METROPOLITAN COLLEGE SCIENCE LECTURE BUILDING RENOVATION

ATLANTA, GA

A 48,000 SF science building renovation included the design of a new forensics, botany, and computer lab, as well as additional lecture classrooms.

GEORGIA GWINNETT COLLEGE BUILDING C3

LAWRENCEVILLE, GA

A new, three-story, 55,000 SF addition to an existing building. Design included classrooms, support spaces, and administrative offices. Design also included a chilled-water, roof-mounted variable volume unit with VAV and PIU terminal boxes and a separate, dedicated unit for IT and Communications. Systems were designed for reduced sound power levels as GGC is walking campus.

GEORGIA STATE UNIVERSITY, CONGLOMERATE

ATLANTA, GA

Design of several projects which include: Classroom South Renovations; Recital Hall Renovations; Recreation Center and Natatorium HVAC Replacements; Indian Creek Park Recreation Services Building.

JACKSONVILLE STATE SPORTS FACILITIES SOFTBALL CONCESSIONS AND RESTROOM BUILDING

JACKSONVILLE, AL

A new two-room pressbox on the upper level, concessions on the ground level, and restrooms throughout the two-story building that serve the softball and soccer fields, and tennis courts.

AUBURN UNIVERSITY NORTH EQUINE RESEARCH BUILDING RENOVATION

AUBURN, AL

The renovation to exiting Equine Research Lab and construction of a new building. Project specialties included large animal waste containment, temperature-controlled wash-down stations and building pressurization control.

AUBURN UNIVERSITY CULINARY SCIENCE CENTER

AUBURN, AL

Project consists of an above- and a below-grade 450-car parking facilities, multi-story academic and hotel buildings, and a single-story retail buildings in a mixed-use configuration. The complex will include state-of-the-art culinary classrooms, instructional laboratories, food hall, and learning and collaborative space that will re-envision hospitality instruction. The new buildings will consist of a variety of flex spaces and functions that help promote and improve faculty and student interaction, and collaboration in an educational setting that fully supports all modern technologies and teaching pedagogies.

AUBURN UNIVERSITY MONTGOMERY STUDENT WELLNESS CENTER

MONTGOMERY, AL

A new 75,000 SF LEED Silver certified recreational facility that includes weight training and cardiovascular areas, aquatics facilities, a running track, climbing wall, and a multipurpose gymnasium. Also provided are spaces from a sun garden to classrooms to performance labs that encourage.

Hospitality



Featured Project

**FOXHALL WESTIN
HOTEL & CONFERENCE
CENTER**

DOUGLASVILLE, GA

ARCHITECT

Cooper Carry

PROJECT DESCRIPTION

New luxury full amenity hotel and conference center located at Foxhall Resort and Sporting Club. The Hotel features:

- 200-key hotel
- 125 Villas
- 20,000 SF spa
- Pool and Tennis venue
- 80,000 SF Meeting and Conference Center with an 8,000 SF ballroom

PROJECT FEATURE

The facility will be the newest addition to Foxhall Resort in Douglasville and is sought to be a valued attraction to South-Atlanta.



Hospitality Project Sampling



THE HYATT HOUSE PEACHTREE DUNWOODY

DUNWOODY, GA

A new, 130,000 SF, 185-key hotel with apartment style guest suites and event and conference space.



PONCE CITY HOTEL

ATLANTA, GA

A 100-key hotel addition to an existing historic hotel with below ground parking.



MARRIOTT AC HOTEL

ATLANTA, GA

A new, 222-key hotel as part of AC Hotels and Marriott International. The hotel will be conveniently located convenient adjacent to Hartsfield Jackson Atlanta International Airport.



COLONY AT THE GRAND CLUB AND RECREATION CENTER

FAIRHOPE, AL

A new, \$17 MM lake front club and recreation center as part of a golf and luxury residences community; Design was provided for nine lighted tennis courts and a stadium center court; multiple pools; lighted nature trails; gazebos and picnic areas; fine dining and full service gourmet kitchen; administrative offices; and service areas.

THE RITZ CARLTON

ATLANTA, GA

Mechanical design services for renovation of the existing domestic hot water system.

CRESTWOOD SUITES

TULSA, OK

Renovations to the main entry canopy. Work included electrical circuitry for new lighting and performance specifications for dry sprinkler fire protection.

BARNESLEY GARDENS RESORT INN & GEORGIAN HALL EVENT CENTER

ADAIRSVILLE, GA

A new, 31,000 SF, 55-room lodge/inn and a 12,600 SF event and conference center (Georgian Hall). The 12,600 SF Georgian Hall includes a meeting space, ball room, kitchen, and support services.

Hospitality Project Sampling

BRAY'S ISLAND DINING CLUB RENOVATION

SHELDON, SC

A 10,000 SF private club dining facility. The design scope included dining areas; private dining rooms; casual bar with dining verandas; a full-service kitchen and lighting design. Lighting renovation and design included color corrected LED fixtures accented with owner furnished decorative chandeliers.

THE OMNI HOTEL RENOVATION AND EXPANSION

INDIANAPOLIS, IN

Renovations to the Hotel's existing restaurant and HVAC system, construction of a new sports bar with kitchen, and hotel HVAC system, lighting and A/V systems. The project design scope also included design for the expansion of existing first floor restrooms, including new layout, plumbing fixtures and lighting.

HAMPTON INN RENOVATION

BEAMONT, TX

A 8,000 SF tenant improvement to the lobby, kitchen, sales and meeting rooms, registration, and storage support spaces.

ARIUM HOMEPLACE CLUB

PRATTVILLE, AL

A new, two-story, 9,000 SF community clubhouse; amenities included fitness center, clubroom, great room, pre-function area, and kitchen and support areas.

BEST WESTERN LOBBY RENOVATION AND ADDITION

ACWORTH, GA

A renovation of an existing hotel lobby and the addition of an apartment for the hotel manager above the lobby space.

CHEROKEE TOWN CLUB RENOVATIONS AND ADDITION

ATLANTA, GA

Electrical engineering and lighting design for renovations and additions to the Tavern and Grant's Dining Room in the exclusive Buckhead town club; The design scope included integration of warm dimming LED fixtures with traditional decorative fixtures into a classical architectural setting. The design also included a digital lighting control system.

THE HOTEL AT AUBURN UNIVERSITY AND DIXON CONFERENCE CENTER RENOVATIONS

AUBURN, AL

Design modifications and renovations of the convention center meeting space and the pool area; The design scope included a new corridor leading to the pool deck and design for the renovation of existing meeting and conference space, pre-function corridor and public restrooms. Design scope also included preparation for construction so that the facility could remain fully operational during construction efforts.

HAMPTON INN RENOVATION

AUBURN, AL

A 20,000 SF tenant improvement to include new serving space and new kitchen. Space also included offices, front desk, and lobby area.

HAMPTON INN CUMBERLAND MALL RENOVATION

ATLANTA, GA

A 4,000 SF tenant improvement to offices, work area, board rooms, kitchen and breakfast serving area, lobby, business center, and breakfast seating area.

MORRISON TEST KITCHEN

ATLANTA, GA

Renovation and expansion of an existing test kitchen for Morrison Restaurants.

COCA-COLA EVENT CENTER

OPELIKA, AL

A renovation and expansion of the historic, 1938 Coca-Cola syrup manufacturing and distribution facility.

MARRIOTT COURTYARD

ATLANTA, GA

A new 8-story hotel in Midtown Atlanta.

MARRIOTT MARQUIS

ATLANTA, GA

Renovation design scope included heat exchanger, valves and piping and central cooling plant with chillers, cooling towers, pumps and heat exchanger.

MARRIOTT COURTYARD

BOCA RATON, FL

A complete renovation of an existing 4-story hotel.

JAMESON SUITES

PEORIA, IL

Renovations to all public areas; Design scope included lobby; breakfast lounge; fitness center; and a new, indoor pool.

JAMESON SUITES

AUGUSTA, GA

A complete renovation to all public space in the hotel; the design scope included lobby; breakfast area; reception and check in; vending; business center; and corridors.

Industrial



Featured Project

**PRINTPACK
MANUFACTURING
FACILITY**

BLOOMINGTON, IN

ARCHITECT

Warner Summers

PROJECT DESCRIPTION

A new, 250,000 SF manufacturing and printing facility. The project design scope included:

- Heat recovery analysis
- Foam agent fire protection
- Smog hogs
- Compressed air system
- Solvent tank
- Low-voltage cabling
- Energy model calculations
- Facility offices

PROJECT FEATURE

This project is designed for LEED certification.



Industrial Project Sampling



AMAZON FULFILLMENT CENTER

SAN BERNARDINO, CA

A 1,000,000 SF Amazon distribution warehouse.



THE HOME DEPOT

NATIONWIDE

Conway & Owen has provided design services for The Home Depot for nearly two decades. Working closely with the Country's top Architecture firms has led to nearly 50 projects throughout the United States including new construction and renovation projects. Such projects include office spaces, an employee childcare center, a cafe, and more than two dozen distribution centers. Conway & Owen is also a major participant in the brands new prototype for distribution warehouses nationwide. The prototype has been developed to adjust to facility layouts, regional location; while being flexible to adjust to the required local code requirements.



MITSUBISHI POWER SYSTEMS TURBINE MANUFACTURING PLANT

SAVANNAH, GA

A 230,000 SF industrial manufacturing plant with 30,000 SF of office space.



THE TIRE RACK

SAVANNAH, GA

A new, 240,000 SF warehouse and distribution facility, including conveyor system design.

UNILEVER DISTRIBUTION CENTER

VARIOUS LOCATIONS

Design services for distribution centers over 3,000,000 SF across the United States.

PLASTECH ENGINEERED PRODUCTS

BIRMINGHAM, AL

A new injection molding manufacturing facility in Jefferson Metropolitan Industrial Park is 260,000 SF of manufacturing area and approximately 30,000 SF of offices.

Industrial Project Sampling

BEST BUY LOUISVILLE SERVICE CENTER

LOUISVILLE, KY

A new, 160,000 SF computer service center for the Geek Squad division of Best Buy; The design included a computer repair center application with special humidity control and a dust collection system.

2A USA DIECAST EXPANSION

AUBURN, AL

A 30,000 SF addition to the existing industrial plant and a renovation to the existing plant. The addition consists of a new metal die casting area and machining area with dual lifting cranes. The additional is designed to be naturally ventilated with operable windows and louvers. The renovated area contains new ADA restrooms, office space, and parts washing area.

MANSFIELD OIL COMPANY HEADQUARTERS EXPANSION

GAINESVILLE, GA

Design services for a 30,000 SF expansion and complete interior fit-up. The project included a 3" raised flooring with modular wiring for a hi-tech furniture system and a new generator distribution system designed for the facilities critical systems.

MESH ENGINEERING

DAWSONVILLE, GA

A new 17,000 SF heated and ventilated and 13,000 SF of conditioned area. Space includes offices, conference rooms, IT room, cafeteria, vision/training lab, assembly area, and welding area.

RED STAR YEAST PLANT

HEADLAND, AL

A 30,000 SF yeast manufacturing plant for Lesaffre Yeast Corporation added to the campus of Lesaffre Yeast Corporation/Red Star Yeast Company. It was a design-build job for Bailey-Harris. Space includes manufacturing, warehouse, refrigerated storage, shipping/receiving, and office space. We provided design services, as well as helping with extensive BIM coordination.

CURB TECHNOLOGIES OFFICE WAREHOUSE

AUBURN, AL

A renovation to an existing 21,418 SF warehouse and the addition of a 1,500 SF office space.

SHAW INDUSTRIES CARPET AND TILE MANUFACTURING PLANT

CARTERSVILLE, GA

A new, 750,000 SF manufacturing and warehousing facility. Design scope included nine, 4000-amp electrical services to serve manufacturing equipment. The plant was designed to meet LEED® Silver requirements. LED light fixtures were used throughout the entire building and an efficient heating system was utilized to gain maximum LEED® points.

MUSCLE SHOALS TREATMENT PLANT INDUSTRIAL FACILITY

MUSCLE SHOALS, AL

The project consists of a new 32,000 SF wood treatment facility that features a treatment area, storage areas, and office space.

104 MEDLEY WAREHOUSE

MEDLEY, FL

The conversion of an existing rear loading warehouse to a front loading and adding two shell offices spaces.

TENNESSEE VALLEY AUTHORITY (TVA) BULL RUN FOSSIL PLANT POWER AND LIGHTING UPGRADES

CLINTON, TN

Design for power and lighting upgrades to the TVA Pre-Ground Limestone facility that housed a 2,354 SF blower building and two silos. Design scope included area lighting for 24-hour operation and convenience power for welders and other maintenance equipment.

ATLANTIC SOUTHEAST AIRLINES (ASA) HANGER RENOVATION

COLLEGE PARK, GA

A renovation of an existing 165,000 SF, multi-story aircraft hanger. Design scope included new variable volume air handlers to make use of existing chilled water/hot water systems that would condition new offices; new, state-of-the-art simulation and training facilities; 20-ton redundant computer room units sized for the new data center; new heating and ventilation to process areas of hanger; and new plumbing design. The project also required replacement of a chiller, pumps and computer room units and upgrading all existing controls to DDC.

VERISTOR

DULUTH, GA

A 33,000 SF build-out with 24,000 SF of office space for the industrial office/warehouse building. The remaining space will be a heated/ventilated warehouse.

HD SUPPLY

ATLANTA, GA

A 75,000 SF interior build-out of warehouse space with 21,500 SF of general and admin office space.

K-12



Featured Project

AUBURN HIGH SCHOOL

AUBURN, AL

ARCHITECT

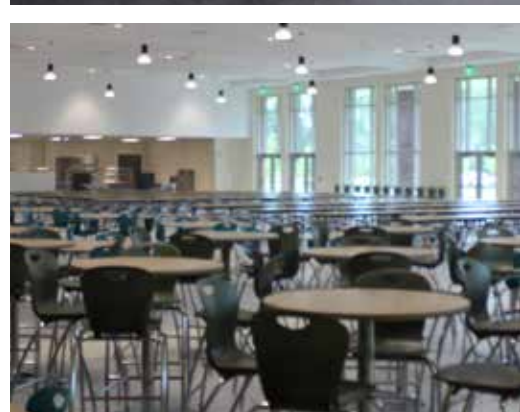
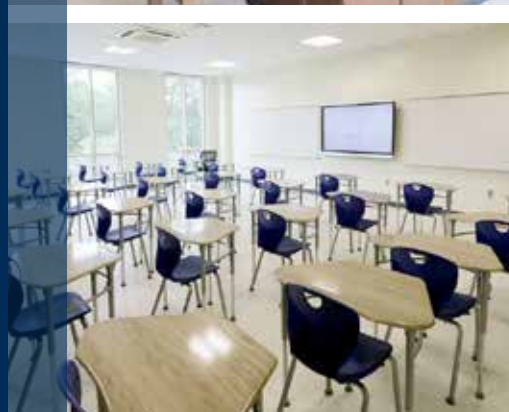
Perkins + Will

PROJECT DESCRIPTION

A new 340,000 SF high school is located on a 100-acre campus with three school buildings - the academic building, arts building, and athletic building. Each building is designed to support a 2,200-student population. The project also included a 12,000 SF, 820-seat theatre/ auditorium with working stage with lowering systems; LED theatrical and house lighting. The project achieved LEED certification.

PROJECT FEATURE

The \$72 Million project was designed uniquely to provide students the appropriate space for long-term learning. Including in this campus are three floors of academic classrooms and labs for teaching, as well as career tech program spaces like, Aquaculture lab featuring three large fish tanks and a state-of-the-art filtration system for teaching water chemistry; engineering lab; advertising and graphic design high-tech classrooms; multimedia rooms; special education classrooms; a student collaborative spaces sprinkled throughout the campus. Science labs are designed to support chemistry, anatomy, earth science, biology and eventually biomedical sciences.



K-12 Project Sampling



DOBYNS-BENNETT HIGH SCHOOL SCIENCE & TECHNOLOGY ADDITION

KINGSPORT, TN

A new science and technology addition to an existing high school. It is assumed the new site utilities will be provided to accommodate all the necessary utility needs including electrical, sanitary, sewer and storm.



ARABIA MOUNTAIN HIGH SCHOOL, DEKALB COUNTY SCHOOL DISTRICT

LITHONIA, GA

A new, state-of-the-art, 240,000 SF new high school. Scope included a 600-seat performing arts theater/auditorium, 1,400-seat gymnasium, kitchen, cafeteria, technology center, library, 42-classrooms, 10-science laboratories, career technology laboratories, greenhouse, and a media center. Arabia Mountain is be the first public high school in the Southeast to achieve LEED® and a potential prototypical public school of the future. Project achieved LEED Silver certification.



CARY WOODS ELEMENTARY SCHOOL

AUBURN, AL

Design services provided for a new two-story classroom building. The project is being designed to achieve LEED certification.



SAVANNAH COUNTRY DAY SCHOOL, LOWER SCHOOL

SAVANNAH, GA

The new 52,500 SF building will house grades PreK-5, the media center, science facilities, and administrative offices for the Lower School. This is first LEED®-NC school in Savannah.

THE WALKER SCHOOL SCIENCE & TECHNOLOGY BUILDING

MARIETTA, GA

A 35,000 SF, three-story building includes four middle school science labs, dedicated labs for middle and upper school robotics, a middle school tech classroom, four biology/chemistry labs, two physics labs, a media tech suite, an outdoor classroom, faculty work suites and student collaboration/breakout areas.

K-12 Project Sampling

PIKE ROAD K-8 SCHOOL

PIKE ROAD, AL

Project consisted of a 100,000 SF, \$13 Million primary education school for grades K-8. Design included MEP/FP, network systems, media retrieval systems, theatrical lighting, and sound systems. Features of the school include a gymnasium, auditorium, media center, full kitchen, and classrooms.

HOLY INNOCENTS' EPISCOPAL SCHOOL UPPER SCHOOL

ATLANTA, GA

A new, 60,000 SF school building.

EPSTEIN SCHOOL, RENOVATION

SANDY SPRINGS, GA

A 30,000 SF renovation to an existing 55,000 SF private elementary school. Renovations included the kitchen, cafeteria, offices, and common areas. Work also included theatrical lighting and sound design for the performing stage.

FIFTH AVENUE ACADEMY, CITY SCHOOLS OF DECATUR

DECATUR, GA

A new three-story, 45,000 SF, 4th and 5th grade school. The school project includes 21-classrooms, a two-story multipurpose room with stage, media center, art and science rooms, 200-seat cafeteria with professional grade kitchen, administrative offices, and support staff areas.

DECATUR CITY SCHOOLS, TALLEY STREET 3-5 ELEMENTARY SCHOOL

DECATUR, GA

A new, two-story, 90,000 SF elementary school. The school was designed to achieve LEED certification.

FELLOWSHIP CHRISTIAN SCHOOL, HIGH SCHOOL AND COMMONS

ROSWELL, GA

A new, 50,000 SF high school building and 28,000 SF commons building. The new construction features a new high school classroom building plus the commons housing a dining hall with a full kitchen, cybercafé, chapel, and performing arts theater.

DOTHAN CITY SCHOOLS IDIQ

DOTHAN, AL

The project consists of two major components of the system-wide facility improvements for the school system. The first major component is the Summer 2019 facility work in nine different schools for the accommodation of the master plan for the new school layouts. Scope of work includes the MEP/FP and low voltage associated with the architectural changes made in the summer 2019 bid packages. The second major component of the scope is the energy PC work to be done with Trane's recommendations.

RABUN GAP NACOOCHEE SCHOOL MIDDLE SCHOOL RENOVATION

RABUN GAP, GA

The project consists of renovations to 27,000 SF of an existing 35,000 SF school. Space includes classrooms, student workrooms, laboratories, fine arts classroom, teacher lounge, computer lab, great room, media storage, offices, conference rooms, and support spaces.

FELLOWSHIP CHRISTIAN SCHOOL MIDDLE & HIGH SCHOOL RENOVATION

ROSWELL, GA

An interior renovation of 45,784 SF of the three-story building.

DARLINGTON SCHOOL, DORMITORIES RENOVATIONS SOUTH HALL & WILCOX HALL

ROME, GA

A renovation project of two, three-story, 55,000 SF dormitory buildings. Scope included the renovation of the existing space to accommodate over 50 dorm rooms, apartments, student lounges, laundry facilities, kitchens for each building, and shared restrooms.

WOODWARD ACADEMY LOWER SCHOOL ADDITION

COLLEGE PARK, GA

Phased renovation and expansion to the Lower School which included an addition to house a new lower lobby and orchestra room, addition to the gymnasium, lobby renovations and rebranding of the entire school circulation.

WOODWARD ACADEMY GRESHAM HALL

COLLEGE PARK, GA

Electrical and lighting design services were provided for the student waiting area on the first floor of Gresham hall.

ETHOS CLASSICAL CHARTER SCHOOL EXISTING SCHOOL RENOVATION

ATLANTA, GA

A 11,000 SF renovation to a building that was formerly a church and school to a classroom building.

THE HOME DEPOT CORPORATE, CAMPUS DAYCARE

ATLANTA, GA

A 40,000 SF daycare facility designed for the childcare needs of the employees' children.

Mission Critical



Mission Critical Project Sampling

CBEYOND

ATLANTA, GA

Design services for the expansion of an existing data center. The UPS, generator, DC and HVAC systems were upgraded to improve reliability; Two utility service transformers were designed with primary distribution from separate substation circuits; the A/B system design extended from the utility services throughout the data center to provide isolated A/B distribution with emergency tie capability.

AHFA SERVER ROOM UPGRADE HBAA 2ND FLOOR TENANT

MONTGOMERY, AL

The project consists of the removal of an existing 3-ton computer room cooling system and replacing with an 8-ton system, to accommodate the additional growth and load produced by the server racks.

SOUTHERN INSURANCE UNDERWRITERS

ALPHARETTA, GA

Design services for a new data center addition within an existing office building; Design scope included new chilled water HVAC systems, APC Infrastructure, UPS distribution and accommodation for future generators.

COX COMMUNICATION, DUKE DRIVE DATA CENTER

ALPHARETTA, GA

Design services for re-commissioning of UPS and battery systems; Project scope included providing the Method of Procedure (MOP), observing the installation and providing final documentation.

CARTER'S INC. AT BRANDYWINE

FAYETTEVILLE, GA

Design for a 3,200 SF data center consisting of an 800A electrical service and a 500kW emergency standby generator; The project design also included in-row cooling units in lieu of more conventional full room units.

JACKSON HEALTHCARE CORPORATE OFFICES

ALPHARETTA, GA

A 180,000 SF built-to-suit corporate office building featuring executive and administrative offices, IT Department and data center, kitchen and dining facilities, fitness facility with racquetball court, and game room. The design includes a 5-story atrium with smoke control and 2N UPS and generator distribution.

METRO PCS DATA CENTER UPGRADE

NORCROSS, GA

Multiple projects for two data centers contained within a single facility; The scope included renovation of one data center and expansion of the other data center. HVAC systems included N+1 redundancy and direct expansion type equipment.

INTERCONTINENTAL HOTELS DATA CENTER UPGRADE

ALPHARETTA, GA

Design services for the replacement of an existing 750 kva single UPS to two 500kVA A/B system and distribution and expansion of the HVAC capacities.

TDC CORPORATION

MARIETTA, GA

A built-to-suit 3-story, 18,000 SF corporate office building shell and core with interior fit-up design. The facility includes private and open offices, conference and training space, Marketing Department, IT and server room with emergency generator distribution, executive office suites, outdoor terrace, and warehouse.

TRANSMONTAIGNE DATA CENTER

ROSWELL, GA

Design services were provided for the renovation of an existing data center. Space includes a SCADA room, a computer room, a UPS room, a hospitality room, and support spaces.

Mixed-Use



Featured Project

FENTON MIXED-USE
DEVELOPMENT

CARY, NC

ARCHITECT

Wakefield Beasley & Associates /
NELSON

PROJECT DESCRIPTION

Fenton, the 92-acre mixed-use project is located at the intersection of Cary Town Boulevard and Trinity Road. The initial phase will consist of a 99,000 SF retail store; 263,000 SF of specialty and experiential retail, including a movie theater and food hall; a 146,400 SF loft office; 350-apartment units; and a 175-key hotel. The project is being designed to achieve LEED certification.

The project will consist of a large big box grocery retail, single story retail, free standing retail out parcels, loft office over retail, multifamily over retail, restaurants and food hall, entertainment venues, a hotel, and parking areas within a high-density development. The development will offer 2.5 million SF of retail, office, restaurant, hotel and multifamily.

PROJECT FEATURE

The new urban live-work-play experience includes eight parking decks, several office buildings, hotels, and six community gathering areas in addition to high-end condos and apartments.



Mixed-Use Project Sampling



ATLANTIC STATION CENTRAL PARK CONGLOMERATE

ATLANTA, GA

The walkable urban campus underwent addition and renovations to both public and private facilities. In addition to many retail and office tenant fit-ups, Conway & Owen was tasked to provide design services for the renovation main public greenspace. Work includes a water fountain feature, provide (3) two 50A/2P, 208V, 1-Phase power distribution boxes for the Synthetic Turf Park area, Parking Deck Ventilation, and upgrade to two electrical rooms located between 18th and 19th street.



THE CHAMBLEE CENTER

CHAMBLEE, GA

A mixed-use five-story space consisting of a total of 167,000 SF of hotel, event hall, bank, restaurants, food court, and white box tenant space, as well as 252,000 SF of enclosed parking. Mechanical systems include ventilation for enclosed parking, standard split systems for office, retail, and restaurant spaces, grease exhaust and make-up air for restaurants, and variable refrigerant volume split systems for the



JONQUIL VILLAGE

SMYRNA, GA

A 500,000 SF development mixed-use area that is over 12 acres, has over twelve-hundred parking spaces, and features retail, condominium, and offices above parking.



3354 PEACHTREE

ATLANTA, GA

A new 44-story, skyline-defining, mixed-use tower will feature 560,000 SF of Class AA office space (levels 5-26), 62 ultra-luxury condominiums (levels 28-44), and 11,000 SF of street-level retail, above-market parking, and a suite of modern amenities.

ATLANTA DAIRIES DEVELOPMENT RETAIL AND OFFICES

ATLANTA, GA

The design of multiple buildings totaling 85,000 SF that include renovation of existing retail, restaurant, office buildings. Work also include a new building with retail and office core & shell design. Work also included pedestrian and private roadway lighting.

Mixed-Use Project Sampling



BROOKWOOD CONDOMINIUMS

ATLANTA, GA

A new 20-story, high-rise mixed-use building in downtown Atlanta. The project is nearly 800,000 SF and includes street-level retail, 219 condominium units, green deck amenities with a clubhouse and swimming pool, and five-level underground residential parking. Brookwood is Atlanta's largest residential project achieved LEED certification.

THE PARAMOUNT

TUSCALOOSA, AL

A new high-rise mixed-use development that consists of over 500,000 SF and includes ground level retail space, full service restaurant, full service fitness center, over 300-apartments, and a five-star hotel.

AMB 1080 RESIDENCE

ATLANTA, GA

The project consists of 1,750 SF of modifications and additions to the existing residence and additions to the existing pool house.

METROPOLITAN RESIDENTIAL TOWER

ATLANTA, GA

A new 425,000 SF, 35-story residential tower including apartments, retail, amenities, and an enclosed 10-level 625,000 SF parking deck.

THE WHATLEY CORE AND SHELL

AUBURN, AL

A new 5-story, 26,600 SF core and shell design for a mixed-use building featuring retail on the first level and residential on the second, third, fourth, and fifth levels.



ABERCORN CONDOMINIUMS

SAVANNAH, GA

A new 20,000 SF, 2-story building with retail on the ground level and twelve condominium units on the second level.

OAKLAND PARK CONDOMINIUMS

ATLANTA, GA

A new LEED Silver-designed six-story mixed-use building consisting of 65 condominium units, ground level retail, and below grade parking. Oakland was the first residential construction to be certified by USGBC and won the 2008 Central Atlanta Progress, Inc./Atlanta Downtown Improvement District's "Design of Excellence" Award.

COLLEGE OF CHARLESTON DORMITORY AND APARTMENT COMPLEX

CHARLESTON, SC

A 450,000 SF project consisting of college dormitories, an apartment complex, and a seven-story parking deck. The apartment building is a four-story building, can accommodate 199 students, and is built above retail space that includes a CVS Pharmacy that we design built. The dormitory is a six-story, 420-student residential hall that is atop a cafeteria. These spaces include individual residence spaces and community spaces with game rooms, lounge areas, home theaters, and laundries.

Municipal



Featured Project

MILTON CITY HALL

MILTON, GA

ARCHITECT

Perkins+Will

PROJECT DESCRIPTION

This 33,500 SF judicial complex includes administrative offices, court room and council chambers, meeting space for residents and a town green for expansion of special events in Crabapple.



Municipal Project Sampling



GARDEN CITY TOWN HALL, POLICE, FIRE AND JUDICIAL COMPLEX

GARDEN CITY, GA

A new, 35,000 SF judicial complex that includes City Hall, City Police and Fire Departments, Municipal Court and City Council. The Police Station is complete with staff offices, locker rooms, holding cells, sally port, investigative laboratory and canine work area.



CITY OF MILTON PUBLIC SAFETY COMPLEX

MILTON, GA

A new 33,500 SF Police, Fire and Courthouse complex serving as the Judicial and Government of The City, as well as the Police Fire Headquarters to three Milton fire stations; includes housing for ladder trucks.

AUBURN FIRE STATION

AUBURN, AL

The fire station will be a small free-standing station with two apparatus bays.

CITY OF RIVERDALE PARKING DECK

RIVERDALE, GA

The project consists of a new two-level open parking garage for city of Riverdale.



CRISP COUNTY COURTHOUSE

CORDELE, GA

A new 35,000 SF two-story county courthouse with four courtrooms, offices, and council meeting spaces.



SUWANEE CITY HALL

SUWANEE, GA

The two-story, 24,000 SF City Hall and Judicial Center includes court rooms and Judges Chambers, meeting and conference space and general offices.

ROCKDALE SHERIFF DEPARTMENT RENOVATION AND EXPANSION

ROCKDALE, GA

The project consists of the renovation and expansion of an existing building. Work included the renovation to the third floor in the south east corner, and the addition/ expansion to the third-floor training room, workout room, lockers, sauna, steam room, and other support spaces.

JONESBORO CITY MUNICIPAL COMPLEX

JONESBORO

A new municipal complex consisting of City Departments, Council Chambers, and Police Station. Scope of work also included campus lighting.

Municipal Project Sampling

ATLANTA WATER PLANT OFFICE RENOVATION

ATLANTA, GA

A 60,000 SF renovation of three floors. The design scope included replacement of primary air handling system; air-cooled chiller; electric boiler; chilled water and hot water pumps; and chilled water and hot water piping system.

CHEROKEE COUNTY AIRPORT

BALL GROUND, GA

A new two-story, 10,200 SF terminal building. The scope also included special design elements for the generator.

CLAYTON COUNTY HEALTH CENTER

CLAYTON COUNTY, GA

Interior fit-up design of over 70,000 SF that includes the conversion of an existing industrial manufacturing facility to a full-service community health center. Space includes medical exam and immunization rooms; laboratory space; dental exam rooms; infectious disease rooms; classrooms; offices and other support space. Scope also included emergency stand-by power for telecomm and part of the facility.

YELLOW RIVER WATER RECLAMATION FACILITY OPERATIONS BUILDING

LILBURN, GA

A new, two-story building LEED certified that includes an IDF room; supply room; janitor closets; multiple conference rooms; training area; administrative and general office spaces; control room; private offices; locker rooms; break room; and private restrooms.

BERKELEY LAKE CITY HALL

BERKELEY LAKE, GA

A new 3,800 SF building includes offices, City Council/public meeting room, emergency supply and communication areas, and reception station.

FORSYTH COUNTY COURTHOUSE ANNEX BUILDING BOILER REPLACEMENT

CUMMING, GA

Existing boiler replacement in a three-story office/court building.

FLOWERY BRANCH CITY HALL / JUDICIAL COMPLEX

FLOWERY BRANCH, GA

A new 18,000 SF facility that consists of offices, holding cells, training spaces, conference rooms, large meeting and function spaces, court rooms, and a full kitchen.

MARION COUNTY COURTHOUSE RENOVATION

BUENA VISTA, GA

Built in 1850, The Marion County Courthouse is on the National Register of Historic Places and is used as a courthouse today. Conway & Owen provided design for upgrades to the building as part of renovation efforts. Our project scope included the electrical design required to provide for the addition of an elevator.

TALBOT COUNTY COURTHOUSE

TALBOTTEN, GA

The Courthouse was built in 1892 and is used as a courthouse today. Our work on the upgrades to the building included the electrical design to provide for the addition of an elevator.

WASHINGTON COUNTY BUILDING REPURPOSE

ATLANTA, GA

A two-phased project. Phase 1 included the demolition and renovation of an existing facility. Phase 2 included the addition a pre-engineered diesel mechanics building.

DALTON FIRE STATION #1 RENOVATIONS

DALTON, GA

Modifications to a two-story, 21,500 SF station including new HVAC system and modifications to kitchen, locker rooms and shower rooms, and other areas throughout the station.

MARIETTA FIRE STATION #56

MARIETTA, GA

A new 11,000 SF fire station that includes a dorm room, private bathrooms, offices, kitchen and breakroom, training room, turn-out gear room, clean room, two patios, and three apparatus bays.

COBB COUNTY BUILDING & PARKING DECK SECURITY UPGRADE

MARIETTA, GA

An upgrade to the power of five exterior doors on 1st floor for new electric strike system and a new security lobby and partial renovation on the 2nd floor. Work also included three parking decks. The CCB parking deck work included new cameras, new "blue" emergency wall stations & IT rack. The Superior North Parking Deck work included new cameras, new "blue" emergency wall stations & IT rack; and the Lawrence Street Parking Deck included new cameras, new "blue" emergency wall stations & IT rack.

Retail



Featured Project

COLONIAL TOWN
PARK

SMYNA, TN

ARCHITECT

Infinity Architecture

PROJECT DESCRIPTION

A retail development consisting over 275,000 SF of shell, site Infrastructure, and interior build-out for anchors and vanilla box. Retail stores include Target, Dollar Tree, Kohls, Ross, Staples, and PetSmart, including restaurants.



Retail Project Sampling



CVS PHARMACIES

SOUTHEAST UNITED STATES

More than 50 new stores throughout Alabama, Florida, Georgia, Mississippi, and South Carolina.

OLDE BLIND DOG IRISH PUB

MILTON, GA

The design of a restaurant and bar for a cold dark shell retail building includes a specialized imported cooler component to serve imported beer at an exact temperature, LED lighting and Neutron Dimming System, commercial kitchen, and gas fired rooftop HVAC.

MACY'S DEPARTMENT STORE

ORLANDO, FL

A new 200,000 SF, two-story department store.

HOUMA CROSSING

HOUMA, LA

A new 16,500 SF retail building.

MALL OF LOUISIANA POWER CENTER

BATON ROUGE, LA

A new 104,000 SF retail center with scope including building shell, site infrastructure, vanilla box tenants, and interior build-out for anchor tenants.

BLOOMINGDALE'S DEPARTMENT STORE

SKOKIE, IL

A new 240,000 SF, three-story department store.

VILLAGE AT CREEKSTONE

CUMMING, GA

A 27,000 SF retail center with multiple buildings.

EASTRIDGE SHOPPING CENTER

HENDERSON, NC

A new 35,000 SF vanilla box retail center.



BOWLERO ATLANTIC STATION

ATLANTA, GA

A 36,500 SF bowling alley with 30-lanes, digital gaming area, and sports bar.

THRIVE ATLANTA DAIRIES COFFEEHOUSE AND COLD BREW BAR

ATLANTA, GA

A new restaurant located in the Atlanta Dairies mixed-use development.

SHOPPES AT PALM POINTE

ORANGE BEACH, AL

The design of multiple buildings totaling 190,000 SF of retail center that includes 50,000 SF of shell design and vanilla box fit-up for tenants such as: Movie Gallery, Coastal Couture, Beach Planet, Go Fish, Hershey's, Orange Beach Nails, Island Invites, Fantastic Fanz, and Guthrie's.

VILLAGE AT OLD TRACE

MARIETTA, GA

A new 50,000 SF retail center. Additional interior build-out of several tenants was also included in the scope of work.

SHOPPES AT ABERCORN

SAVANNAH, GA

A new 22,000 SF retail center.

PARAGON GOLF

DULUTH, GA

A new multi-tiered golf range including outdoor lighting, electric ball retrieval/conveyor system, automatic tees, concessions, and indoor food court.

IN ITALY RESTAURANT

AUBURN, AL

A 5,500 SF, tenant fit-up in a five-story building.

Retail Project Sampling

GANDER MOUNTAIN DEPARTMENT STORE

MOORESVILLE, NC

A new 60,000 SF building shell and interior design for an outdoor sporting goods store.

FERGUSON SHOWROOM

ATLANTA, GA

The project consists of a 15,000 SF tenant improvement project to the existing retail showroom.

SUNSOUTH TRACTOR

AUBURN, AL

A new 23,600 SF facility including retail, administrative, and warehouse spaces.

BISTRO JOJO

ATLANTA, GA

Renovation and re-branding of the existing Joel's Restaurant to a French style bistro.

SEARS OUTLET

JACKSONVILLE, FL

Interior build-out for a 20,000 SF, second generation space for a new Sears Outlet Store.

SHERWIN WILLIAMS RETAIL STORE

ATLANTA, GA

Design for a prototype retail store; project designed according to Earthcraft® design standards.

SHOGUN RESTAURANT

COLUMBUS, GA

A new 10,000 SF Japanese eatery including ten Hibachi grills, each with dedicated grease exhaust hoods.

ULTA AT ALTAMONTE MALL -

ALTAMONTE SPRINGS, FL

A 10,000 SF interior retail build-out.

CUMBERLAND MALL SITE LIGHTING

SMYRNA, GA

Exterior lighting design for the re-lighting of the existing parking lots at a major mall in the metropolitan Atlanta area.

PLANET BLUE MIAMI INTERIOR MODIFICATIONS

MIAMI, FL

The project consists of design modifications to an existing retail store. Space includes sales floor, manager/safe office, fitting rooms, cashwrap and jewelry counter area, and support spaces.

PLANET BLUE BUCKHEAD INTERIOR MODIFICATIONS

ATLANTA, GA

The project consists of design modifications to an existing retail store. Space includes sales floor, manager/safe office, fitting rooms, cashwrap and jewelry counter area, and support spaces.

CARIBOU COFFEE

AUBURN, AL

Second generation Tenant Fit-Up for a Caribou Coffee shop in the Daughon Library on the Auburn University campus. Mechanical, electrical and plumbing design included a commercial kitchen, utility space, service areas and a dining facility.

JOEY'S PILATES AT HALCYON

ALPHARETTA, GA

The project consists of the interior fit-up of a Pilates and fitness studio on the 2nd floor of the Halcyon 800 building.

IHOP

ATLANTA, GA

A new 4,500 SF IHOP restaurant.

LAKESHORE MALL LIGHTING RENOVATION

GAINESVILLE, GA

Complete lighting renovation of existing mall common areas.

GULF COAST TRAVEL MART TENANT FIT-UP

SARASOTA, FL

A second-generation tenant fit-up design consisting of 3,300 SF of retail space including a commercial kitchen.

RISING ROLL GOURMET

ATLANTA, GA

A 2,600 SF tenant fit-up with work including tie-in to base building MEP systems. HVAC systems included provisions for commercial kitchen equipment (grease exhaust, make-up air), while the plumbing systems included grease waste.

ZAXBY'S LOT 6 LOWES OF MUSTANG PHASE II

MUSTANG, OK

A new restaurant that includes dining space, drive-thru, food prep, dry storage, dish washing area, cooler and freezers, and support spaces.

BOATER'S WORLD

ST. PETERSBURG, FL

An interior build-out for 8,500 SF boating supply store.

DUNKIN' DONUTS SARASOTA AIRPORT TENANT FIT-UP

SARASOTA, FL

A 3,100 SF, tenant fit-up including the design of MEP systems. The tenant includes a commercial kitchen for Dunkin Donuts with plumbing and electrical layout for the kitchen equipment, and design of a grease waste system. The mechanical system includes the expansion of the base building chilled water system.

Sports & Residential



Featured Project

AUBURN UNIVERSITY
JORDAN-HARE
STADIUM
CONGLOMERATE

AUBURN, AL

ARCHITECT

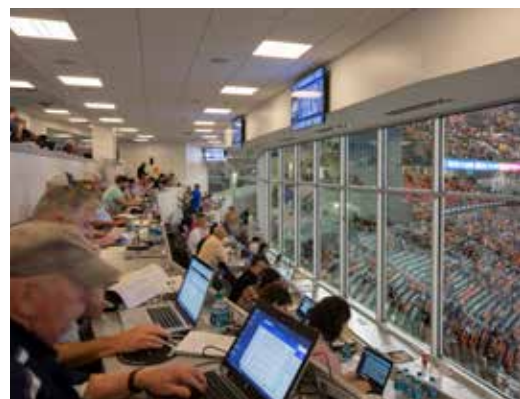
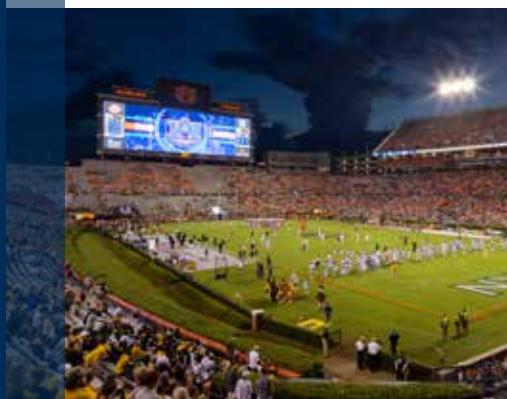
HOK

PROJECT DESCRIPTION

The project scopes for multiple projects throughout Jordan-Hare Stadium included MEP/FP and lighting design for the renovated areas and the addition of fire protection systems for all levels. Areas of work included the Press Box, Media Areas, Concessions, Luxury Lounges, Covered Seating Areas, Club Levels, Concourses, and Locker Room. A complete lightning protection analysis was provided for the stadium structure.

PROJECT FEATURE

In addition to renovating the southwest corner of the stadium, a new press box and brand new Harbert Family Recruiting Center were included in a renovation project.



Sports & Recreation Project Sampling



GEORGIA DOME RENOVATION

ATLANTA, GA

A \$30,000,000 renovation of the Club Level, Level A Suites, Level B Suites, addition of new serving kitchen on Level B, addition of underground grease traps for entire east half of the Dome, and HVAC air distribution modifications to accommodate a new LED Ribbon Board, new lighting, and over 80 television monitors for the main and upper level concourses and concessions. The scope also included plumbing study and design for replacement of the domestic water piping risers and entire loop on the Club Level. Phase II consisted of a plumbing study and design for replacement of the domestic water piping risers and entire loop on the Lower Level.



ATLANTA BALLET CENTRE FOR DANCE EDUCATION

ATLANTA, GA

A 20,000 SF facility for the Atlanta Ballet Company. This project achieved Gold-LEED certification and includes five (5) large dance studios, costume and boutique shop, showers, locker rooms, administrative offices, prop construction, and warehouses.



CLEMSON INDOOR PRACTICE FACILITY AND CHILLED WATER UPGRADE

CLEMSON, SC

A state-of-the-art indoor sports turf field facility that included restrooms, training room, weight/rehab room, storage, and an entry lobby and also a chilled water upgrade that modified the existing air rotation units to accept chilled water coils and meet indoor temp requirements dictated by Clemson University. The project scope also include integration of the operation with the campus chilled water loop and coordination of LEED efforts for the football operations complex design team.



FOLEY SPORTS TOURISM COMPLEX

FOLEY, AL

A new 88,000 SF, multi-configurable indoor venue that could include six basketball courts, 12 volleyball courts, concert venue, convention / meeting space, and all associated locker rooms, offices and storage space.

JUG TAVERN PARK

WINDER, GA

A picnic pavilion, concert performance pavilion, and restroom building. Scope includes connecting site lighting, demolition and relocation of existing electrical utilities already on site.

Sports & Recreation Project Sampling

HARLAND BOYS & GIRLS CLUB OF METRO ATLANTA

ATLANTA, GA

A new 30,000 SF, two-story building for the Boys and Girls Club of Atlanta. Space includes a kitchen, dining room, gymnasium, dress rooms, laundry, film/video lab, production lab, design/tech lab, teen classroom open to a café, art studio, dance studio, art gallery, offices and conference rooms, multipurpose spaces, and support spaces.

AUM STUDENT WELLNESS CENTER

MONTGOMERY, AL

A new 75,000 SF recreational facility for students that is designed for LEED®-NC certification. The design includes weight and aerobics rooms, swimming pool, basketball courts, running track, rock climbing wall, meeting spaces, student lounge, and a health/juice snack bar.

CITY OF AUBURN FRANK BROWN RECREATION CENTER

AUBURN, AL

Project consists of the renovation of existing gymnasium spaces, offices, game rooms, and kitchen. Mechanical, electrical and plumbing upgrades as well as code compliance are incorporated into the renovation scope. The project also includes the expansion of the current offices and meeting spaces with 8,700 SF of new spaces.

FLYWHEEL BUCKHEAD

ATLANTA, GA

A 6,400 SF indoor cycling fitness suite located in the Buckhead Atlanta development. Space includes reception area, retail boutique area, office/storage area, locker area, and spa like shower rooms.

FORT MCALLISTER STATE HISTORIC PARK

RICHMOND HILL, GA

The project consists of six (6) cabins with similar design features. The designs of the cabins are based on Earthcraft standards.

UNICOI STATE PARK

HELEN, GA

Cabin renovations including a new key card entry system, pre-fabricated fireplaces, kitchen and bathroom design and new HVAC units for each individual cabin.

AUBURN UNIVERSITY BASKETBALL LOCKER ROOM RENOVATION

AUBURN, AL

The project consists of the renovation of the existing Men's basketball locker room at Auburn Arena.

AUBURN UNIVERSITY PLAINSMAN PARK LOCKER ROOM RENOVATIONS

AUBURN, AL

Renovations to the home team locker room facility. Renovations include a new locker room with AV capabilities, a new player lounge and recreation area, a new hot/cold immersion therapy room, new rainier room, and support/laundry areas.

RED TOP MOUNTAIN STATE PARK

CARTERSVILLE, GA

Design for a new, prototype cabin.

MURRAY GOLF HOUSE AT THE NEW BOBBY JONES GOLF COURSE

ATLANTA, GA

The design of three new buildings consisting of a 3-story, 21,000 SF club building with offices, meeting rooms, a grille, and storage space

UNION COUNTY US FOREST SERVICE RANGE-NUTTER

BLAIRSVILLE, GA

Work included a noise study and a sound level analysis for more than a dozen key locations including rifle and pistol shooting ranges. The sound level analysis also included distance, shooting angle, terrain, and environmental factors as the range is located near the Appalachian Trail and residences.

GORDONIA ALTAMAHA STATE PARK

REEDSVILLE, GA

Design for Park cabins and a golf rest station; all design in accordance with Earthcraft® design standards

BERT ADAMS SCOUT RESERVATION

COVINGTON, GA

A Scout Reservation complex with approximately 54,000 SF of indoor space and over 1,900 SF of covered outdoor space. The complex consists of a dining hall, pool pavilion, nature center, archery/BB Range, shower house, program center, covered gathering pavilions, and tent pavilions. The dining hall is two-stories with seating for over 600 and offers a full commercial kitchen. The lower level of the dining hall has staff residences, conference rooms, laundry, and a retail store. The pool pavilion houses locker rooms, offices, and the pool equipment room. The Nature Center offers classroom space and animal cases. The Program Center is 16,000 SF and has classroom space, a pottery area with kiln, offices, and covered pavilions. The Archery/BB Range has 24 covered lanes with office, storage, and restrooms.

CONWAY & OWEN

Georgia | Alabama
www.conway-owen.com

MECHANICAL

ELECTRICAL

PLUMBING

FIRE PROTECTION

LOW-VOLTAGE

LIGHTING DESIGN